



[Go to Product page](#)

Datasheet for ABIN955001

anti-SULT1A3/1A4 antibody (N-Term)

2 Images

Overview

Quantity:	0.4 mL
Target:	SULT1A3/1A4
Binding Specificity:	AA 78-107, N-Term
Reactivity:	Human
Host:	Rabbit
Clonality:	Polyclonal
Conjugate:	This SULT1A3/1A4 antibody is un-conjugated
Application:	Enzyme Immunoassay (EIA), Western Blotting (WB)

Product Details

Immunogen:	KLH conjugated synthetic peptide between 78-107 amino acids from the N-terminal region of human SULT1A3/SULT1A4
Isotype:	Ig Fraction
Specificity:	This antibody reacts to SULT1A3/SULT1A4.
Cross-Reactivity (Details):	Species reactivity (tested):Human.
Purification:	Affinity chromatography on Protein A

Target Details

Target:	SULT1A3/1A4
Alternative Name:	SULT1A3/1A4 (SULT1A3/1A4 Products)

Target Details

Background: Synonyms: Aryl sulfotransferase 1A3/1A4, Catecholamine-sulfating phenol sulfotransferase, HAST3, M-PST, Monoamine-sulfating phenol sulfotransferase, Placental estrogen sulfotransferase, ST1A3/ST1A4, STM, SULT1A3, SULT1A4, Sulfotransferase monoamine-preferring, TL-PST, Thermolabile phenol sulfotransferase

Molecular Weight: 34196 Da

Gene ID: 445329

NCBI Accession: [NP_001017390](#)

Application Details

Application Notes: Optimal working dilution should be determined by the investigator.

Restrictions: For Research Use only

Handling

Format: Liquid

Concentration: 0.25 mg/mL

Buffer: PBS, 0.09 % (W/V) sodium azide

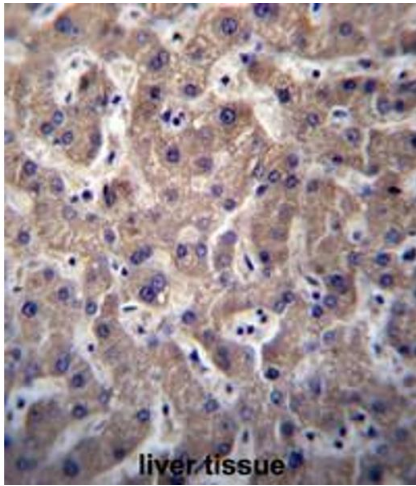
Preservative: Sodium azide

Precaution of Use: This product contains sodium azide: a POISONOUS AND HAZARDOUS SUBSTANCE which should be handled by trained staff only.

Handling Advice: Avoid repeated freezing and thawing.

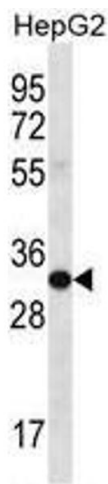
Storage: 4 °C/-20 °C

Storage Comment: Store the antibody undiluted at 2-8 °C for one month or (in aliquots) at -20 °C for longer.



Immunohistochemistry (Paraffin-embedded Sections)

Image 1. SULT1A3/SULT1A4 Antibody (N-term) immunohistochemistry analysis in formalin fixed and paraffin embedded human liver tissue followed by peroxidase conjugation of the secondary antibody and DAB staining. This data demonstrates the use of SULT1A3/SULT1A4 Antibody (N-term) for immunohistochemistry. Clinical relevance has not been evaluated.



Western Blotting

Image 2. SULT1A3/SULT1A4 Antibody (N-term) western blot analysis in HepG2 cell line lysates (35µg/lane). This demonstrates the SULT1A3/SULT1A4 antibody detected the SULT1A3/SULT1A4 protein (arrow).