

Datasheet for ABIN955002  
**anti-SULT1B1 antibody (C-Term)**[Go to Product page](#)

## 2 Images

## Overview

Quantity:	0.4 mL
Target:	SULT1B1
Binding Specificity:	AA 190-219, C-Term
Reactivity:	Human
Host:	Rabbit
Clonality:	Polyclonal
Conjugate:	This SULT1B1 antibody is un-conjugated
Application:	Western Blotting (WB), Enzyme Immunoassay (EIA)

## Product Details

Immunogen:	KLH conjugated synthetic peptide between 190-219 amino acids from the C-terminal region of human SULT1B1
Isotype:	Ig Fraction
Specificity:	This antibody reacts to SULT1B1.
Cross-Reactivity (Details):	Species reactivity (tested):Human.
Purification:	Affinity chromatography on Protein A

## Target Details

Target:	SULT1B1
Alternative Name:	SULT1B1 ( <a href="#">SULT1B1 Products</a> )

## Target Details

**Background:** Sulfotransferase enzymes catalyze the sulfate conjugation of many hormones, neurotransmitters, drugs, and xenobiotic compounds. These cytosolic enzymes are different in their tissue distributions and substrate specificities. The gene structure (number and length of exons) is similar among family members. However, the total genomic length of this gene is greater than that of other SULT1 genes. Synonyms: ST1B1, ST1B2, SULT1B2, Sulfotransferase 1B1, Sulfotransferase 1B2, Sulfotransferase family cytosolic 1B member 1, Thyroid hormone sulfotransferase

**Molecular Weight:** 34899 Da

**Gene ID:** 27284

**NCBI Accession:** [NP\\_055280](#)

## Application Details

**Application Notes:** Optimal working dilution should be determined by the investigator.

**Restrictions:** For Research Use only

## Handling

**Format:** Liquid

**Concentration:** 0.25 mg/mL

**Buffer:** PBS, 0.09 % (W/V) sodium azide

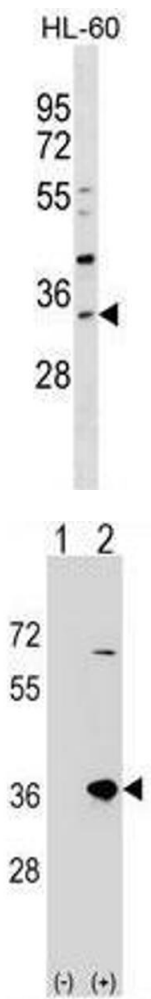
**Preservative:** Sodium azide

**Precaution of Use:** This product contains sodium azide: a POISONOUS AND HAZARDOUS SUBSTANCE which should be handled by trained staff only.

**Handling Advice:** Avoid repeated freezing and thawing.

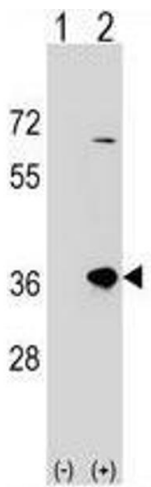
**Storage:** 4 °C/-20 °C

**Storage Comment:** Store the antibody undiluted at 2-8 °C for one month or (in aliquots) at -20 °C for longer.



#### Western Blotting

**Image 1.** SUL1B1 Antibody (C-term) western blot analysis in HL-60 cell line lysates (35µg/lane). This demonstrates the SUL1B1 antibody detected the SUL1B1 protein (arrow).



#### Western Blotting

**Image 2.** Western blot analysis of SUL1B1 (arrow) using rabbit polyclonal SUL1B1 Antibody (C-term) . 293 cell lysates (2 µg/lane) either nontransfected (Lane 1) or transiently transfected (Lane 2) with the SUL1B1 gene.