



[Go to Product page](#)

Datasheet for ABIN955012
anti-SUSD2 antibody (C-Term)

2 Images

Overview

Quantity:	0.4 mL
Target:	SUSD2
Binding Specificity:	AA 715-745, C-Term
Reactivity:	Human
Host:	Rabbit
Clonality:	Polyclonal
Conjugate:	This SUSD2 antibody is un-conjugated
Application:	Western Blotting (WB), Immunohistochemistry (Paraffin-embedded Sections) (IHC (p)), Enzyme Immunoassay (EIA)

Product Details

Immunogen:	KLH conjugated synthetic peptide between 715-745 amino acids from the C-terminal region of human SUSD2
Isotype:	Ig Fraction
Specificity:	This antibody detects SUSD2 (C-term).
Cross-Reactivity (Details):	Species reactivity (tested):Human
Purification:	Protein A column followed by peptide affinity purification

Target Details

Target:	SUSD2
---------	-------

Target Details

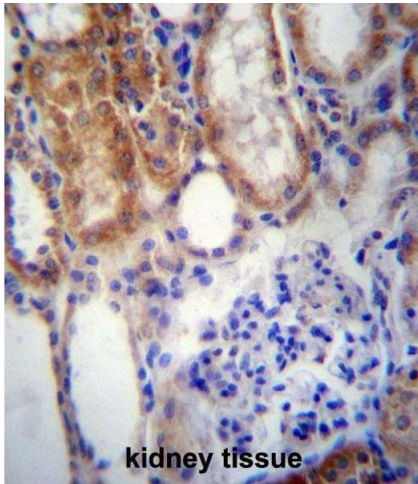
Alternative Name:	SUSD2 (SUSD2 Products)
Background:	Synonyms: Sushi domain-containing protein 2
Molecular Weight:	Molecular Weight: 90208 Da
Gene ID:	56241
NCBI Accession:	NP_062547

Application Details

Application Notes:	Optimal working dilution should be determined by the investigator.
Restrictions:	For Research Use only

Handling

Format:	Liquid
Concentration:	0.25 mg/mL
Buffer:	PBS, 0.09 % (W/V) sodium azide
Preservative:	Sodium azide
Precaution of Use:	This product contains sodium azide: a POISONOUS AND HAZARDOUS SUBSTANCE which should be handled by trained staff only.
Handling Advice:	Avoid repeated freezing and thawing.
Storage:	4 °C/-20 °C
Storage Comment:	Store at 2 - 8 °C for up to six months or (in aliquots) at -20 °C for longer.



Immunohistochemistry (Paraffin-embedded Sections)

Image 1. SUSD2 Antibody (C-term) immunohistochemistry analysis in formalin fixed and paraffin embedded human kidney tissue followed by peroxidase conjugation of the secondary antibody and DAB staining. This data demonstrates the use of SUSD2 Antibody (C-term) for immunohistochemistry. Clinical relevance has not been evaluated.



Western Blotting

Image 2. SUSD2 Antibody (C-term) western blot analysis in WiDr cell line lysates (35 µg/lane). This demonstrates the SUSD2 antibody detected the SUSD2 protein (arrow).