

Datasheet for ABIN955026
anti-SYT8 antibody (Middle Region)[Go to Product page](#)

2 Images

Overview

Quantity:	0.4 mL
Target:	SYT8
Binding Specificity:	AA 67-96, Middle Region
Reactivity:	Human, Mouse
Host:	Rabbit
Clonality:	Polyclonal
Conjugate:	This SYT8 antibody is un-conjugated
Application:	Western Blotting (WB), Immunohistochemistry (Paraffin-embedded Sections) (IHC (p)), Enzyme Immunoassay (EIA)

Product Details

Immunogen:	KLH conjugated synthetic peptide between 67-96 amino acids from the Central region of Human SYT8 (NP_612634.3) Genename: SYT8
Isotype:	Ig Fraction
Specificity:	Recognizes SYT8 (Center).
Purification:	Protein A column followed by peptide Affinity purification

Target Details

Target:	SYT8
Alternative Name:	Synaptotagmin-8 (SYT8 Products)

Target Details

Background: Synaptotagmins, such as SYT8, share a common domain structure that includes a transmembrane domain and a cytoplasmic region composed of 2 C2 domains. Some synaptotagmins are involved in synaptic membrane fusion, while others have a more general function in endocytosis. For further information on synaptotagmins, see MIM 185605. Synonyms: SYT-8, SYT8, Synaptotagmin 8, Synaptotagmin VIII, SytVIII

Gene ID: 90019

NCBI Accession: [NP_612634](#)

Application Details

Application Notes: Optimal working dilution should be determined by the investigator.

Restrictions: For Research Use only

Handling

Format: Liquid

Concentration: 0.25 mg/mL

Buffer: PBS with 0.09 % (W/V) Sodium Azide as preservative

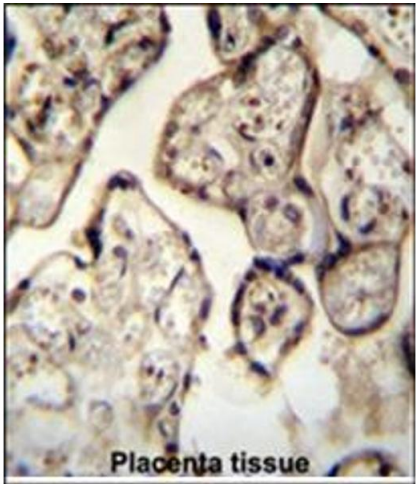
Preservative: Sodium azide

Precaution of Use: This product contains sodium azide: a POISONOUS AND HAZARDOUS SUBSTANCE which should be handled by trained staff only.

Handling Advice: Avoid repeated freezing and thawing.

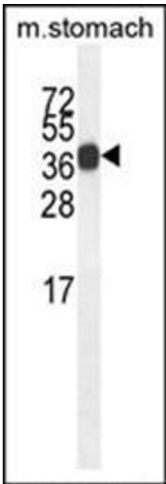
Storage: 4 °C/-20 °C

Storage Comment: Store the antibody undiluted at 2-8 °C for one month or (in aliquots) at -20 °C for longer.



Immunohistochemistry (Paraffin-embedded Sections)

Image 1. Immunohistochemistry analysis in Formalin Fixed, Paraffin Embedded Human Placenta tissue stained with SYT8 antibody (Center) followed by peroxidase conjugation of the secondary antibody and DAB staining. This data demonstrates the use of the SYT8 antibody (Center) for immunohistochemistry. Clinical relevance has not been evaluated.



Western Blotting

Image 2. Western blot analysis using SYT8 Antibody (Center) Cat.-No AP54128PU-N in Mouse stomach tissue lysates (35ug/lane). This demonstrates the SYT8 antibody detected the SYT8 protein (arrow).