



[Go to Product page](#)

Datasheet for ABIN955038  
**anti-STX2 antibody (Middle Region)**

3 Images

### Overview

Quantity:	0.4 mL
Target:	STX2
Binding Specificity:	AA 122-152, Middle Region
Reactivity:	Human, Mouse
Host:	Rabbit
Clonality:	Polyclonal
Conjugate:	This STX2 antibody is un-conjugated
Application:	Western Blotting (WB), Immunohistochemistry (Paraffin-embedded Sections) (IHC (p)), Enzyme Immunoassay (EIA)

### Product Details

Immunogen:	KLH conjugated synthetic peptide between 122-152 amino acids from the Central region of Human STX2 Genename: STX2
Isotype:	Ig Fraction
Specificity:	This antibody recognizes Syntaxin 2 / STX2 (Center).
Cross-Reactivity (Details):	Species reactivity (tested): Human and Mouse.
Purification:	Affinity Chromatography on Protein A

### Target Details

Target:	STX2
---------	------

## Target Details

---

Alternative Name:	Syntaxin 2 / STX2 ( <a href="#">STX2 Products</a> )
Background:	The product of this gene belongs to the syntaxin/epimorphin family of proteins. The syntaxins are a large protein family implicated in the targeting and fusion of intracellular transport vesicles. The product of this gene regulates epithelial-mesenchymal interactions and epithelial cell morphogenesis and activation. Alternatively spliced transcript variants encoding different isoforms have been identified. Synonyms: EPIM, Epimorphin, STX2A, STX2B, STX2C, Syntaxin-2
Molecular Weight:	33341 Da
Gene ID:	2054
NCBI Accession:	<a href="#">NP_001971</a>

## Application Details

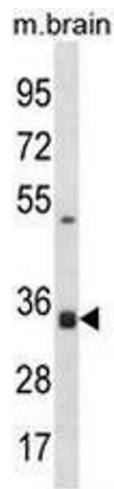
---

Application Notes:	Optimal working dilution should be determined by the investigator.
Restrictions:	For Research Use only

## Handling

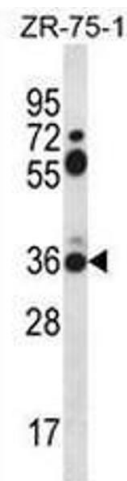
---

Format:	Liquid
Concentration:	0.25 mg/mL
Buffer:	PBS, 0.09 % (W/V) Sodium Azide
Preservative:	Sodium azide
Precaution of Use:	This product contains sodium azide: a POISONOUS AND HAZARDOUS SUBSTANCE which should be handled by trained staff only.
Handling Advice:	Avoid repeated freezing and thawing.
Storage:	4 °C/-20 °C
Storage Comment:	Store undiluted at 2-8 °C for one month or (in aliquots) at -20 °C for longer.



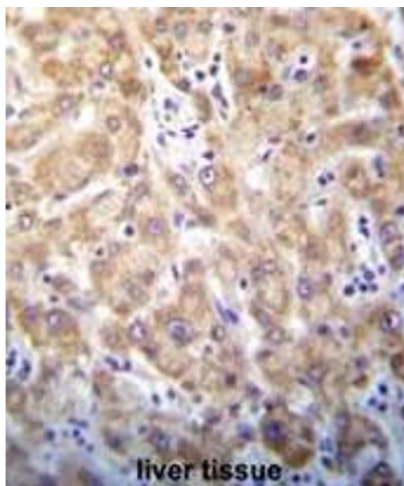
#### Western Blotting

**Image 1.** Western blot analysis in mouse brain tissue lysates (35µg/lane) using Syntaxin 2 / STX2 Antibody (Center) Cat.-No AP54090PU-N. This demonstrates the STX2 antibody detected the STX2 protein (arrow).



#### Western Blotting

**Image 2.** Western blot analysis in ZR-75-1 cell line lysates (35µg/lane) using Syntaxin 2 / STX2 Antibody (Center) Cat.-No AP54090PU-N. This demonstrates the STX2 antibody detected the STX2 protein (arrow).



#### Immunohistochemistry (Paraffin-embedded Sections)

**Image 3.** Immunohistochemistry in Formalin-fixed, Paraffin embedded human liver tissue stained with Syntaxin 2 / STX2 Antibody (Center) followed by peroxidase conjugation of the secondary antibody and DAB staining. This data demonstrates the use of STX2 Antibody (Center) for immunohistochemistry. Clinical relevance has not been evaluated.