



Datasheet for ABIN955048
anti-SYTL1 antibody (Middle Region)



[Go to Product page](#)

1 Image

Overview

Quantity:	0.4 mL
Target:	SYTL1
Binding Specificity:	AA 291-321, Middle Region
Reactivity:	Human
Host:	Rabbit
Clonality:	Polyclonal
Conjugate:	This SYTL1 antibody is un-conjugated
Application:	Western Blotting (WB), Enzyme Immunoassay (EIA)

Product Details

Immunogen:	KLH conjugated synthetic peptide between 291-321 amino acids from the Central region of human SYTL1
Isotype:	Ig Fraction
Specificity:	This antibody detects SYTL1 (Center).
Cross-Reactivity (Details):	Species reactivity (tested):Human
Purification:	Protein A column followed by peptide affinity purification

Target Details

Target:	SYTL1
Alternative Name:	SYTL1 (SYTL1 Products)

Target Details

Background: SYTL1 may play a role in vesicle trafficking (By similarity). It binds phosphatidylinositol 3,4,5-triphosphate. Acts as a RAB27A effector protein and may play a role in cytotoxic granule exocytosis in lymphocytes (By similarity).Synonyms: Exophilin-7, Protein JFC1, SLP1, Synaptotagmin-like protein 1

Gene ID: 84958

NCBI Accession: [NP_001180237](#)

Application Details

Application Notes: Optimal working dilution should be determined by the investigator.

Restrictions: For Research Use only

Handling

Format: Liquid

Concentration: 0.25 mg/mL

Buffer: PBS, 0.09 % (W/V) sodium azide

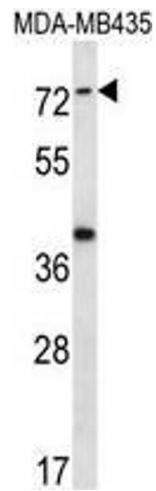
Preservative: Sodium azide

Precaution of Use: This product contains sodium azide: a POISONOUS AND HAZARDOUS SUBSTANCE which should be handled by trained staff only.

Handling Advice: Avoid repeated freezing and thawing.

Storage: 4 °C/-20 °C

Storage Comment: Store at 2 - 8 °C for up to six months or (in aliquots) at -20 °C for longer.



Western Blotting

Image 1. SYTL1 Antibody (Center) western blot analysis in MDA-MB435 cell line lysates (35 µg/lane). This demonstrates the SYTL1 antibody detected the SYTL1 protein (arrow).