

Datasheet for ABIN955049
anti-SYTL3 antibody (N-Term)



[Go to Product page](#)

1 Image

Overview

Quantity:	0.4 mL
Target:	SYTL3
Binding Specificity:	AA 109-139, N-Term
Reactivity:	Human, Mouse
Host:	Rabbit
Clonality:	Polyclonal
Application:	Western Blotting (WB), Enzyme Immunoassay (EIA)

Product Details

Immunogen:	KLH conjugated synthetic peptide between 109-139 amino acids from the N-terminal region of human SYTL3
Isotype:	Ig Fraction
Specificity:	This antibody reacts to SYTL3.
Cross-Reactivity (Details):	Species reactivity (tested): Human and Mouse.
Purification:	Affinity chromatography on Protein A

Target Details

Target:	SYTL3
Alternative Name:	SYTL3 (SYTL3 Products)
Background:	May act as Rab effector protein and play a role in vesicle trafficking. Binds phospholipids in the

Target Details

	presence of calcium ions (By similarity).Synonyms: Exophilin-6, SLP3, Synaptotagmin-like protein 3
Gene ID:	94120
NCBI Accession:	NP_001009991

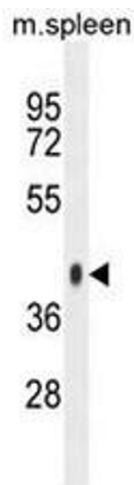
Application Details

Application Notes:	Optimal working dilution should be determined by the investigator.
Restrictions:	For Research Use only

Handling

Format:	Liquid
Concentration:	0.25 mg/mL
Buffer:	PBS, 0.09 % (W/V) sodium azide
Preservative:	Sodium azide
Precaution of Use:	This product contains sodium azide: a POISONOUS AND HAZARDOUS SUBSTANCE which should be handled by trained staff only.
Handling Advice:	Avoid repeated freezing and thawing.
Storage:	4 °C/-20 °C
Storage Comment:	Store the antibody undiluted at 2-8 °C for one month or (in aliquots) at -20 °C for longer.

Images



Western Blotting

Image 1. SYTL3 Antibody (N-term) western blot analysis in mouse spleen tissue lysates (35µg/lane). This demonstrates the SYTL3 antibody detected the SYTL3 protein (arrow).