

Datasheet for ABIN955083
anti-TAS2R1 antibody (C-Term)



[Go to Product page](#)

2 Images

Overview

Quantity:	0.4 mL
Target:	TAS2R1
Binding Specificity:	AA 266-297, C-Term
Reactivity:	Human
Host:	Rabbit
Clonality:	Polyclonal
Conjugate:	This TAS2R1 antibody is un-conjugated
Application:	Western Blotting (WB), Enzyme Immunoassay (EIA)

Product Details

Immunogen:	KLH conjugated synthetic peptide between 266-297 amino acids from the C-terminal region of human TAS2R1
Isotype:	Ig Fraction
Specificity:	This antibody reacts to TAS2R1.
Cross-Reactivity (Details):	Species reactivity (tested):Human.
Purification:	Affinity chromatography on Protein A

Target Details

Target:	TAS2R1
Alternative Name:	TAS2R1 (TAS2R1 Products)

Target Details

Background: This gene encodes a member of a family of candidate taste receptors that are members of the G protein-coupled receptor superfamily and that are specifically expressed by taste receptor cells of the tongue and palate epithelia. This intronless taste receptor gene encodes a 7-transmembrane receptor protein, functioning as a bitter taste receptor. This gene is mapped to chromosome 5p15, the location of a genetic locus (PROP) that controls the detection of the bitter compound 6-n-propyl-2-thiouracil. Synonyms: TRB7, Taste receptor T2R1, Taste receptor family B member 7, Taste receptor type 2 member 1

Molecular Weight: 34333 Da

Gene ID: 50834

NCBI Accession: [NP_062545](#)

Application Details

Application Notes: Optimal working dilution should be determined by the investigator.

Restrictions: For Research Use only

Handling

Format: Liquid

Concentration: 0.25 mg/mL

Buffer: PBS, 0.09 % (W/V) sodium azide

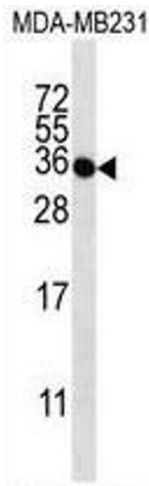
Preservative: Sodium azide

Precaution of Use: This product contains sodium azide: a POISONOUS AND HAZARDOUS SUBSTANCE which should be handled by trained staff only.

Handling Advice: Avoid repeated freezing and thawing.

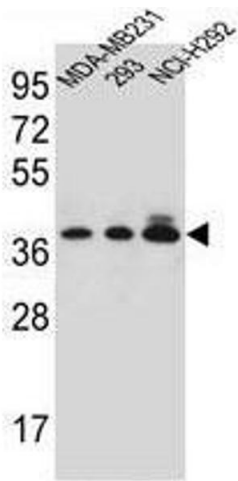
Storage: 4 °C/-20 °C

Storage Comment: Store the antibody undiluted at 2-8 °C for one month or (in aliquots) at -20 °C for longer.



Western Blotting

Image 1. TAS2R1 Antibody (C-term) western blot analysis in MDA-MB231 cell line lysates (35µg/lane). This demonstrates the TAS2R1 antibody detected the TAS2R1 protein (arrow).



Western Blotting

Image 2. TAS2R1 Antibody (C-term) western blot analysis in MDA-MB231, 293, NCI-H292 cell line lysates (35µg/lane). This demonstrates the TAS2R1 antibody detected the TAS2R1 protein (arrow).