

Datasheet for ABIN955086
anti-TAT antibody (Middle Region)

3 Images

[Go to Product page](#)

Overview

Quantity:	0.4 mL
Target:	TAT
Binding Specificity:	Middle Region
Reactivity:	Human
Host:	Rabbit
Clonality:	Polyclonal
Conjugate:	This TAT antibody is un-conjugated
Application:	Western Blotting (WB), Flow Cytometry (FACS), Immunohistochemistry (Paraffin-embedded Sections) (IHC (p)), Enzyme Immunoassay (EIA)

Product Details

Isotype:	Ig Fraction
Specificity:	This antibody reacts to TAT.
Cross-Reactivity (Details):	Species reactivity (tested):Human.
Purification:	Affinity Purified

Target Details

Target:	TAT
Alternative Name:	TAT (Tyrosine Aminotransferase) (TAT Products)
Background:	TAT is a mitochondrial protein tyrosine aminotransferase which is present in the liver and

Target Details

	catalyzes the conversion of L-tyrosine into p-hydroxyphenylpyruvate.Synonyms: L-tyrosine:2-oxoglutarate aminotransferase
Molecular Weight:	50399 Da
Gene ID:	6898
Pathways:	Response to Water Deprivation

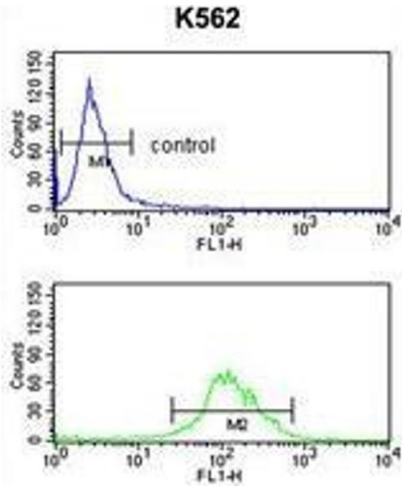
Application Details

Application Notes:	Optimal working dilution should be determined by the investigator.
Restrictions:	For Research Use only

Handling

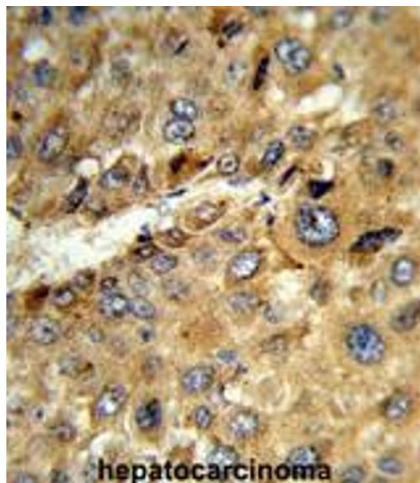
Format:	Liquid
Buffer:	PBS, 0.09 % (W/V) sodium azide

Images



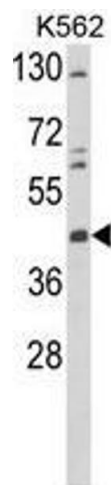
Flow Cytometry

Image 1. TAT Antibody (Center) flow cytometry analysis of K562 cells (bottom histogram) compared to a negative control cell (top histogram).FITC-conjugated goat-anti-rabbit secondary antibodies were used for the analysis.



Immunohistochemistry (Paraffin-embedded Sections)

Image 2. Formalin-fixed and paraffin-embedded human hepatocarcinoma reacted with TAT Antibody (Center), which was peroxidase-conjugated to the secondary antibody, followed by DAB staining. This data demonstrates the use of this antibody for immunohistochemistry; clinical relevance has not been evaluated.



Western Blotting

Image 3. Western blot analysis of TAT Antibody (Center) in K562 cell line lysates (35µg/lane). TAT (arrow) was detected using the purified Pab.