

Datasheet for ABIN955088

## anti-TAX1BP1 antibody (Middle Region)



[Go to Product page](#)

### 1 Image

#### Overview

Quantity:	0.4 mL
Target:	TAX1BP1
Binding Specificity:	AA 399-429, Middle Region
Reactivity:	Human
Host:	Rabbit
Clonality:	Polyclonal
Conjugate:	This TAX1BP1 antibody is un-conjugated
Application:	Western Blotting (WB), Enzyme Immunoassay (EIA)

#### Product Details

Immunogen:	KLH conjugated synthetic peptide between 399-429 amino acids from the Central region of human TAX1BP1
Isotype:	Ig Fraction
Specificity:	This anitbody reacts to TAX1BP1.
Cross-Reactivity (Details):	Species reactivity (tested):Human.
Purification:	Affinity chromatography on Protein A

#### Target Details

Target:	TAX1BP1
Alternative Name:	TAX1BP ( <a href="#">TAX1BP1 Products</a> )

### Target Details

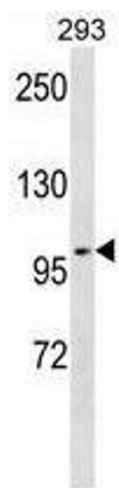
Background:	The HTLV-1 Tax protein transcriptionally activates the HTLV-1 promoter. Tax also binds to and stimulates the expression of cellular genes, including transcription factors and other proteins (Gachon et al., 1998 [PubMed 9733879]).Synonyms: PR00105, T6BP, TRAF6-binding protein, Tax1-binding protein 1
Molecular Weight:	90877 Da
Gene ID:	8887
NCBI Accession:	<a href="#">NP_001073333</a>
Pathways:	<a href="#">TLR Signaling</a>

### Application Details

Application Notes:	Optimal working dilution should be determined by the investigator.
Restrictions:	For Research Use only

### Handling

Format:	Liquid
Concentration:	0.25 mg/mL
Buffer:	PBS, 0.09 % (W/V) sodium azide
Preservative:	Sodium azide
Precaution of Use:	This product contains sodium azide: a POISONOUS AND HAZARDOUS SUBSTANCE which should be handled by trained staff only.
Handling Advice:	Avoid repeated freezing and thawing.
Storage:	4 °C/-20 °C
Storage Comment:	Store the antibody undiluted at 2-8 °C for one month or (in aliquots) at -20 °C for longer.



Western Blotting

**Image 1.** TAX1BP1 Antibody (Center) western blot analysis in 293 cell line lysates (35µg/lane). This demonstrates the TAX1BP1 antibody detected the TAX1BP1 protein (arrow).