

Datasheet for ABIN955091

anti-TBC1D13 antibody (Middle Region)[Go to Product page](#)

4 Images

Overview

Quantity:	0.4 mL
Target:	TBC1D13
Binding Specificity:	AA 83-113, Middle Region
Reactivity:	Human, Mouse
Host:	Rabbit
Clonality:	Polyclonal
Conjugate:	This TBC1D13 antibody is un-conjugated
Application:	Western Blotting (WB), Immunofluorescence (IF), Immunohistochemistry (Paraffin-embedded Sections) (IHC (p)), Enzyme Immunoassay (EIA)

Product Details

Immunogen:	KLH conjugated synthetic peptide between 83-113 amino acids from the Central region of Human TBC1D13
Isotype:	Ig Fraction
Specificity:	This antibody recognizes Human and Mouse TBC1D13 (Center). Other species not tested.
Purification:	Protein A column, followed by peptide affinity purification

Target Details

Target:	TBC1D13
Alternative Name:	TBC1D13 (TBC1D13 Products)

Target Details

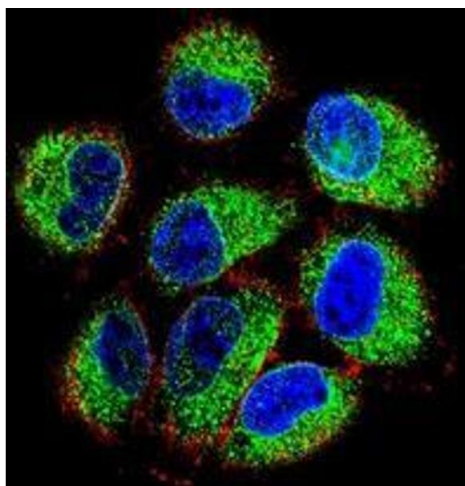
Background:	TBC1D13 may act as a GTPase-activating protein for Rab family protein(s).Synonyms: TBC1 domain family member 13
Molecular Weight:	46554 Da
Gene ID:	54662
NCBI Accession:	NP_060671

Application Details

Application Notes:	Optimal working dilution should be determined by the investigator.
Restrictions:	For Research Use only

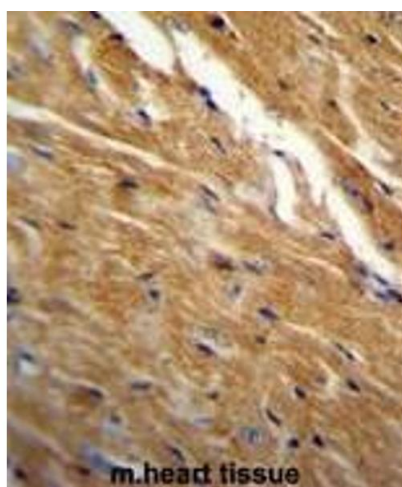
Handling

Format:	Liquid
Concentration:	0.25 mg/mL
Buffer:	PBS, 0.09 % (W/V) Sodium Azide
Preservative:	Sodium azide
Precaution of Use:	This product contains sodium azide: a POISONOUS AND HAZARDOUS SUBSTANCE which should be handled by trained staff only.
Handling Advice:	Avoid repeated freezing and thawing.
Storage:	4 °C/-20 °C
Storage Comment:	Store undiluted at 2-8 °C for one month or (in aliquots) at -20 °C for longer.



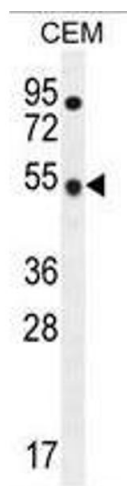
Immunofluorescence

Image 1. Confocal immunofluorescent analysis of TBC1D13 Antibody (Center) Cat.-No AP54165PU-N with NCI-H460 cell followed by Alexa Fluor488-conjugated goat anti-rabbit IgG (green). Actin filaments have been labeled with Alexa Fluor 555 phalloidin (red). DAPI was used to stain the cell nuclear (blue).



Immunohistochemistry (Paraffin-embedded Sections)

Image 2. Formalin Fixed, Paraffin Embedded Mouse heart tissue stained with TBC1D13 Antibody (Center) followed by peroxidase conjugation of the secondary antibody and DAB staining. This data demonstrates the use of TBC1D13 Antibody (Center) for immunohistochemistry. Clinical relevance has not been evaluated.



Western Blotting

Image 3. Western blot analysis using TBC1D13 Antibody (Center) Cat.-No AP54165PU-N in CEM cell line lysates (35µg/lane). This demonstrates the TBC1D13 antibody detected the TBC1D13 protein (arrow).

Please check the [product details page](#) for more images. Overall 4 images are available for ABIN955091.