

Datasheet for ABIN955092
anti-TBC1D21 antibody (N-Term)[Go to Product page](#)

1 Image

Overview

Quantity:	0.4 mL
Target:	TBC1D21
Binding Specificity:	AA 65-95, N-Term
Reactivity:	Human
Host:	Rabbit
Clonality:	Polyclonal
Conjugate:	This TBC1D21 antibody is un-conjugated
Application:	Western Blotting (WB), Enzyme Immunoassay (EIA)

Product Details

Immunogen:	KLH conjugated synthetic peptide between 65-95 amino acids from the N-terminal region of human TBC1D21
Isotype:	Ig Fraction
Specificity:	This antibody reacts to TBC1D21.
Cross-Reactivity (Details):	Species reactivity (tested):Human.
Purification:	Affinity chromatography on Protein A

Target Details

Target:	TBC1D21
Alternative Name:	TBC1D21 (TBC1D21 Products)

Target Details

Background:	TBC1D21 may act as a GTPase-activating protein for Rab family protein(s).Synonyms: TBC1 domain family member 21
Gene ID:	161514
NCBI Accession:	NP_699187

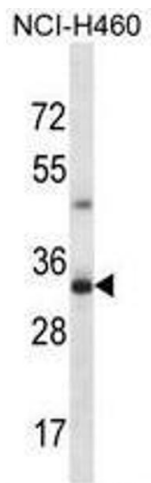
Application Details

Application Notes:	Optimal working dilution should be determined by the investigator.
Restrictions:	For Research Use only

Handling

Format:	Liquid
Concentration:	0.25 mg/mL
Buffer:	PBS, 0.09 % (W/V) sodium azide
Preservative:	Sodium azide
Precaution of Use:	This product contains sodium azide: a POISONOUS AND HAZARDOUS SUBSTANCE which should be handled by trained staff only.
Handling Advice:	Avoid repeated freezing and thawing.
Storage:	4 °C/-20 °C
Storage Comment:	Store the antibody undiluted at 2-8 °C for one month or (in aliquots) at -20 °C for longer.

Images



Western Blotting

Image 1. TBC1D21 Antibody (N-term) western blot analysis in NCI-H460 cell line lysates (35µg/lane). This demonstrates the TBC1D21 antibody detected the TBC1D21 protein (arrow).