

Datasheet for ABIN955098
anti-TBC1D3H antibody (N-Term)[Go to Product page](#)

1 Image

Overview

Quantity:	0.4 mL
Target:	TBC1D3H
Binding Specificity:	AA 13-42, N-Term
Reactivity:	Human
Host:	Rabbit
Clonality:	Polyclonal
Conjugate:	This TBC1D3H antibody is un-conjugated
Application:	Western Blotting (WB), Enzyme Immunoassay (EIA)

Product Details

Immunogen:	KLH conjugated synthetic peptide between 13-42 amino acids from the N-terminal region of human TBC1D3H
Isotype:	Ig Fraction
Cross-Reactivity (Details):	Species reactivity (tested):Human.
Purification:	Affinity chromatography on Protein A

Target Details

Target:	TBC1D3H
Alternative Name:	TBC1D3H (TBC1D3H Products)
Background:	TBC1D3H acts as a GTPase activating protein for RAB5. It does not act on RAB4 or RAB11 (By

Target Details

	similarity).Synonyms: TBC1 domain family member 3H
Molecular Weight:	62199 Da
Gene ID:	9606

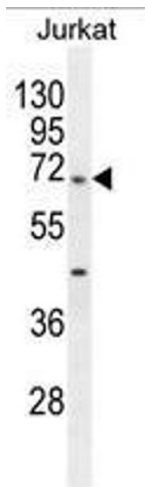
Application Details

Application Notes:	Optimal working dilution should be determined by the investigator.
Restrictions:	For Research Use only

Handling

Format:	Liquid
Concentration:	0.25 mg/mL
Buffer:	PBS, 0.09 % (W/V) sodium azide
Preservative:	Sodium azide
Precaution of Use:	This product contains sodium azide: a POISONOUS AND HAZARDOUS SUBSTANCE which should be handled by trained staff only.
Handling Advice:	Avoid repeated freezing and thawing.
Storage:	4 °C/-20 °C
Storage Comment:	Store the antibody undiluted at 2-8 °C for one month or (in aliquots) at -20 °C for longer.

Images



Western Blotting

Image 1. TBC1D3H Antibody (N-term) western blot analysis in Jurkat cell line lysates (35µg/lane). This demonstrates the TBC1D3H antibody detected the TBC1D3H protein (arrow).