

Datasheet for ABIN955105
anti-TBCEL antibody (C-Term)[Go to Product page](#)

2 Images

Overview

| | |
|----------------------|--|
| Quantity: | 0.4 mL |
| Target: | TBCEL |
| Binding Specificity: | AA 384-413, C-Term |
| Reactivity: | Human |
| Host: | Rabbit |
| Clonality: | Polyclonal |
| Conjugate: | This TBCEL antibody is un-conjugated |
| Application: | Western Blotting (WB), Immunohistochemistry (Paraffin-embedded Sections) (IHC (p)), Enzyme Immunoassay (EIA) |

Product Details

| | |
|-----------------------------|--|
| Immunogen: | KLH conjugated synthetic peptide between 384-413 amino acids from the C-terminal region of human TBCEL |
| Isotype: | Ig Fraction |
| Specificity: | This antibody reacts to TBCEL. |
| Cross-Reactivity (Details): | Species reactivity (tested):Human. |
| Purification: | Affinity chromatography on Protein A |

Target Details

| | |
|---------|-------|
| Target: | TBCEL |
|---------|-------|

Target Details

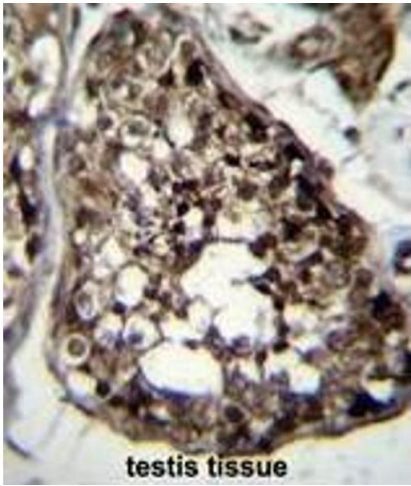
| | |
|-------------------|--|
| Alternative Name: | TBCEL (TBCEL Products) |
| Background: | Synonyms: LRRC35, Tubulin-specific chaperone cofactor E-like protein |
| Molecular Weight: | 48195 Da |
| Gene ID: | 219899 |
| NCBI Accession: | NP_001123519 |

Application Details

| | |
|--------------------|--|
| Application Notes: | Optimal working dilution should be determined by the investigator. |
| Restrictions: | For Research Use only |

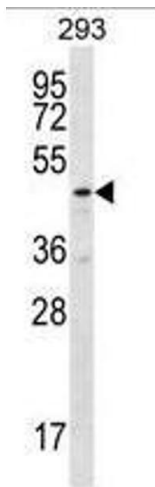
Handling

| | |
|--------------------|--|
| Format: | Liquid |
| Concentration: | 0.25 mg/mL |
| Buffer: | PBS, 0.09 % (W/V) sodium azide |
| Preservative: | Sodium azide |
| Precaution of Use: | This product contains sodium azide: a POISONOUS AND HAZARDOUS SUBSTANCE which should be handled by trained staff only. |
| Handling Advice: | Avoid repeated freezing and thawing. |
| Storage: | 4 °C/-20 °C |
| Storage Comment: | Store the antibody undiluted at 2-8 °C for one month or (in aliquots) at -20 °C for longer. |



Immunohistochemistry (Paraffin-embedded Sections)

Image 1. TBCEL Antibody (C-term) immunohistochemistry analysis in formalin fixed and paraffin embedded human testis tissue followed by peroxidase conjugation of the secondary antibody and DAB staining. This data demonstrates the use of TBCEL Antibody (C-term) for immunohistochemistry. Clinical relevance has not been evaluated.



Western Blotting

Image 2. TBCEL Antibody (C-term) western blot analysis in 293 cell line lysates (35µg/lane). This demonstrates the TBCEL antibody detected the TBCEL protein (arrow).