

Datasheet for ABIN955129
anti-TCHP antibody (Middle Region)

3 Images

[Go to Product page](#)

Overview

Quantity:	0.4 mL
Target:	TCHP
Binding Specificity:	AA 306-370, Middle Region
Reactivity:	Human
Host:	Rabbit
Clonality:	Polyclonal
Application:	Western Blotting (WB), Flow Cytometry (FACS), Immunohistochemistry (Paraffin-embedded Sections) (IHC (p)), Enzyme Immunoassay (EIA)

Product Details

Immunogen:	KLH conjugated synthetic peptide between 306~370 amino acids from the Center region of human TCHP
Isotype:	Ig Fraction
Specificity:	This antibody detects TCHP (Center).
Cross-Reactivity (Details):	Species reactivity (tested):Human
Purification:	Protein A column; followed by peptide affinity purification

Target Details

Target:	TCHP
Alternative Name:	TCHP (TCHP Products)

Target Details

Background: TCHP may act as a 'capping' or 'branching' protein for keratin filaments in the cell periphery. This protein may regulate K8/K18 filament and desmosome organization mainly at the apical or peripheral regions of simple epithelial cells. Synonyms: Mitochondrial protein with oncostatic activity, Mitostatin, Trichoplein keratin filament-binding protein

Gene ID: 84260

NCBI Accession: [NP_001137324](#)

Application Details

Application Notes: Optimal working dilution should be determined by the investigator.

Restrictions: For Research Use only

Handling

Format: Liquid

Concentration: 0.25 mg/mL

Buffer: PBS with 0.09 % (W/V) sodium azide

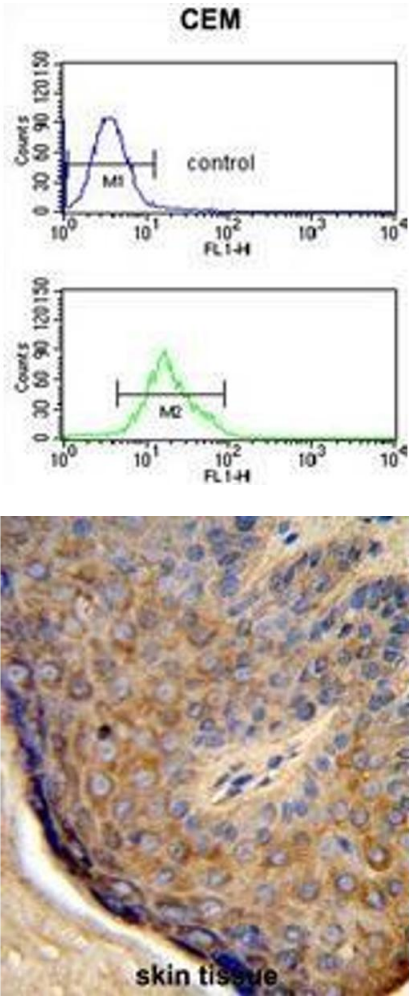
Preservative: Sodium azide

Precaution of Use: This product contains sodium azide: a POISONOUS AND HAZARDOUS SUBSTANCE which should be handled by trained staff only.

Handling Advice: Avoid repeated freezing and thawing.

Storage: 4 °C/-20 °C

Storage Comment: Store at 2 - 8 °C for up to six months or (in aliquots) at -20 °C for longer.



Flow Cytometry

Image 1. TCHP Antibody (Center) flow cytometric analysis of CEM cells (bottom histogram) compared to a negative control cell (top histogram). FITC-conjugated goat-anti-rabbit secondary antibodies were used for the analysis.

Immunohistochemistry (Paraffin-embedded Sections)

Image 2. Formalin-fixed and paraffin-embedded human skin tissue reacted with TCHP Antibody (Center), which was peroxidase-conjugated to the secondary antibody, followed by DAB staining. This data demonstrates the use of this antibody for immunohistochemistry; clinical relevance has not been evaluated.

Western Blotting

Image 3. Western blot analysis of TCHP Antibody (Center) in CEM cell line lysates (35 µg/lane). TCHP (arrow) was detected using the purified Pab.

