



[Go to Product page](#)

Datasheet for ABIN955132

## anti-TCRb antibody (Middle Region)

### 1 Image

#### Overview

Quantity:	0.4 mL
Target:	TCRb
Binding Specificity:	AA 74-102, Middle Region
Reactivity:	Human
Host:	Rabbit
Clonality:	Polyclonal
Conjugate:	This TCRb antibody is un-conjugated
Application:	Western Blotting (WB), Enzyme Immunoassay (EIA)

#### Product Details

Immunogen:	KLH conjugated synthetic peptide between 74-102 amino acids from the Central region of human TCRB
Isotype:	Ig Fraction
Cross-Reactivity (Details):	Species reactivity (tested):Human
Purification:	Protein A column followed by peptide affinity purification

#### Target Details

Target:	TCRb
Alternative Name:	TCRB ( <a href="#">TCRb Products</a> )
Background:	The receptors on T cells consist of immunoglobulin like integral membrane glycoproteins

## Target Details

---

containing 2 polypeptide subunits, alpha and beta, of similar molecular weight, 40 to 55 kD in the human. Like the immunoglobulins of the B cells, each T cell receptor subunit has, external to the cell membrane, an N terminal variable domain and a C terminal constant domain. T cell receptors recognise foreign antigens which have been processed as small peptides and bound to major histocompatibility complex molecules at the surface of antigen presenting cells. Each T cell receptor is a dimer consisting of one alpha and one beta chain or one delta and one gamma chain. In a single cell, the T cell receptor loci are rearranged and expressed in the order delta, gamma, beta, and alpha. If both delta and gamma rearrangements produce functional chains, the cell expresses delta and gamma. If not, the cell proceeds to rearrange the beta and alpha loci. Synonyms: T-cell receptor beta chain V region CTL-L17

---

Gene ID: 9606

## Application Details

---

Application Notes: Optimal working dilution should be determined by the investigator.

Restrictions: For Research Use only

## Handling

---

Format: Liquid

Concentration: 0.25 mg/mL

Buffer: PBS with 0.09 % (W/V) sodium azide

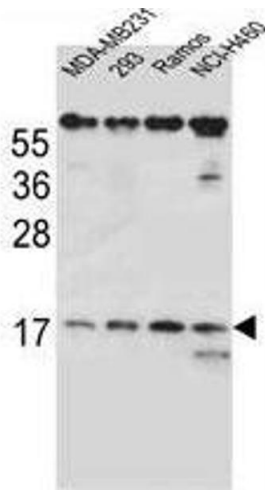
Preservative: Sodium azide

Precaution of Use: This product contains sodium azide: a POISONOUS AND HAZARDOUS SUBSTANCE which should be handled by trained staff only.

Handling Advice: Avoid repeated freezing and thawing.

Storage: 4 °C/-20 °C

Storage Comment: Store at 2 - 8 °C for up to six months or (in aliquots) at -20 °C for longer.



### Western Blotting

**Image 1.** TCRB Antibody (Center) western blot analysis in MDA-MB231, 293, Ramos, NCI-H460 cell line lysates (35 µg/lane). This demonstrates the TCRB antibody detected the TCRB protein (arrow).