

Datasheet for ABIN955134

anti-TDRD1 antibody (C-Term)[Go to Product page](#)**1** Image

Overview

Quantity:	0.4 mL
Target:	TDRD1
Binding Specificity:	AA 973-1002, C-Term
Reactivity:	Human
Host:	Rabbit
Clonality:	Polyclonal
Conjugate:	This TDRD1 antibody is un-conjugated
Application:	Western Blotting (WB), Enzyme Immunoassay (EIA)

Product Details

Immunogen:	KLH conjugated synthetic peptide between 973-1002 amino acids from the C-terminal region of human TDRD1
Isotype:	Ig Fraction
Specificity:	This antibody detects TDRD1 (C-term).
Cross-Reactivity (Details):	Species reactivity (tested):Human
Purification:	Protein A column followed by peptide affinity purification

Target Details

Target:	TDRD1
Alternative Name:	TDRD1 (TDRD1 Products)

Target Details

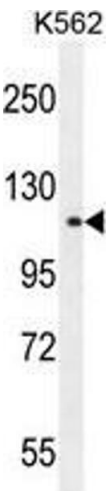
Background:	This gene is similar to a mouse gene that encodes a tudor domain protein. Alternatively spliced transcript variants have been described but their full length sequences have not been determined.Synonyms: CT41.1, Cancer/testis antigen 41.1, Tudor domain-containing protein 1
Gene ID:	56165
NCBI Accession:	NP_942090
Pathways:	Ribonucleoprotein Complex Subunit Organization

Application Details

Application Notes:	Optimal working dilution should be determined by the investigator.
Restrictions:	For Research Use only

Handling

Format:	Liquid
Concentration:	0.25 mg/mL
Buffer:	PBS with 0.09 % (W/V) sodium azide
Preservative:	Sodium azide
Precaution of Use:	This product contains sodium azide: a POISONOUS AND HAZARDOUS SUBSTANCE which should be handled by trained staff only.
Handling Advice:	Avoid repeated freezing and thawing.
Storage:	4 °C/-20 °C
Storage Comment:	Store at 2 - 8 °C for up to six months or (in aliquots) at -20 °C for longer.



Western Blotting

Image 1. TDRD1 Antibody (C-term) western blot analysis in K562 cell line lysates (35 µg/lane). This demonstrates the TDRD1 antibody detected the TDRD1 protein (arrow).