



Datasheet for ABIN955143  
**anti-TEKT1 antibody (Middle Region)**



[Go to Product page](#)

1 Image

Overview

Quantity:	0.4 mL
Target:	TEKT1
Binding Specificity:	AA 251-281, Middle Region
Reactivity:	Human
Host:	Rabbit
Clonality:	Polyclonal
Conjugate:	This TEKT1 antibody is un-conjugated
Application:	Western Blotting (WB), Enzyme Immunoassay (EIA)

Product Details

Immunogen:	KLH conjugated synthetic peptide between 251-281 amino acids from the Central region of human TEKT1
Isotype:	Ig Fraction
Specificity:	This antibody detects Tektin-1 (TEKT1) (Center).
Cross-Reactivity (Details):	Species reactivity (tested):Human
Purification:	Protein A column followed by peptide affinity purification

Target Details

Target:	TEKT1
Alternative Name:	Tektin-1 (TEKT1) ( <a href="#">TEKT1 Products</a> )

## Target Details

---

**Background:** This gene product belongs to the tektin family of proteins. Tektins comprise a family of filament-forming proteins that are coassembled with tubulins to form ciliary and flagellar microtubules. This gene is predominantly expressed in the testis and in mouse, tektin 1 mRNA was localized to the spermatocytes and round spermatids in the seminiferous tubules, indicating that it may play a role in spermatogenesis.

**Gene ID:** 83659

**NCBI Accession:** [NP\\_444515](#)

## Application Details

---

**Application Notes:** Optimal working dilution should be determined by the investigator.

**Restrictions:** For Research Use only

## Handling

---

**Format:** Liquid

**Concentration:** 0.25 mg/mL

**Buffer:** PBS with 0.09 % (W/V) sodium azide

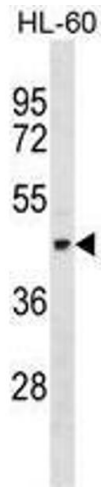
**Preservative:** Sodium azide

**Precaution of Use:** This product contains sodium azide: a POISONOUS AND HAZARDOUS SUBSTANCE which should be handled by trained staff only.

**Handling Advice:** Avoid repeated freezing and thawing.

**Storage:** 4 °C/-20 °C

**Storage Comment:** Store at 2 - 8 °C for up to six months or (in aliquots) at -20 °C for longer.



#### Western Blotting

**Image 1.** TEKT1 Antibody (Center) western blot analysis in HL-60 cell line lysates (35 µg/lane). This demonstrates the TEKT1 antibody detected the TEKT1 protein (arrow).