



[Go to Product page](#)

Datasheet for ABIN955144

## anti-TNMD antibody (Middle Region)

### 2 Images

#### Overview

|                      |                                                 |
|----------------------|-------------------------------------------------|
| Quantity:            | 0.4 mL                                          |
| Target:              | TNMD                                            |
| Binding Specificity: | AA 220-249, Middle Region                       |
| Reactivity:          | Human, Mouse                                    |
| Host:                | Rabbit                                          |
| Clonality:           | Polyclonal                                      |
| Conjugate:           | This TNMD antibody is un-conjugated             |
| Application:         | Western Blotting (WB), Enzyme Immunoassay (EIA) |

#### Product Details

|                             |                                                                                                    |
|-----------------------------|----------------------------------------------------------------------------------------------------|
| Immunogen:                  | KLH conjugated synthetic peptide between 220-249 amino acids from the Central region of human TNMD |
| Isotype:                    | Ig Fraction                                                                                        |
| Specificity:                | This antibody detects Tenomodulin (TNMD) (Center).                                                 |
| Cross-Reactivity (Details): | Species reactivity (tested): Human, mouse                                                          |
| Purification:               | Protein A column followed by peptide affinity purification                                         |

#### Target Details

|           |                               |
|-----------|-------------------------------|
| Target:   | TNMD                          |
| Abstract: | <a href="#">TNMD Products</a> |

## Target Details

---

**Background:** This gene encodes a protein that is related to chondromodulin-I, which is a cartilage-specific glycoprotein that functions to stimulate chondrocyte growth and to inhibit tube formation of endothelial cells. This protein is also an angiogenesis inhibitor. Genetic variation in this gene is associated with a risk for type 2 diabetes, central obesity and serum levels of systemic immune mediators in a body size-dependent manner. This gene is also a candidate gene for age-related macular degeneration, though a direct link has yet to be demonstrated. Synonyms: CHM1L, Chondromodulin-1-like protein, Chondromodulin-I-like protein, Myodulin, Tendin

**Gene ID:** 64102

**NCBI Accession:** [NP\\_071427](#)

## Application Details

---

**Application Notes:** Optimal working dilution should be determined by the investigator.

**Restrictions:** For Research Use only

## Handling

---

**Format:** Liquid

**Concentration:** 0.25 mg/mL

**Buffer:** PBS with 0.09 % (W/V) sodium azide

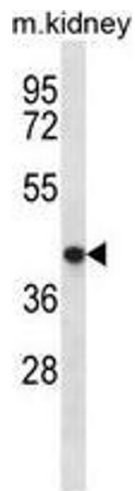
**Preservative:** Sodium azide

**Precaution of Use:** This product contains sodium azide: a POISONOUS AND HAZARDOUS SUBSTANCE which should be handled by trained staff only.

**Handling Advice:** Avoid repeated freezing and thawing.

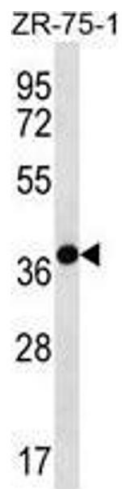
**Storage:** 4 °C/-20 °C

**Storage Comment:** Store at 2 - 8 °C for up to six months or (in aliquots) at -20 °C for longer.



#### Western Blotting

**Image 1.** TNMD Antibody (Center) western blot analysis in mouse kidney tissue lysates (35  $\mu$ g/lane). This demonstrates the TNMD antibody detected the TNMD protein (arrow).



#### Western Blotting

**Image 2.** TNMD Antibody (Center) western blot analysis in ZR-75-1 cell line lysates (35  $\mu$ g/lane). This demonstrates the TNMD antibody detected the TNMD protein (arrow).