

Datasheet for ABIN955159

**anti-Tetraspanin 2 antibody (Middle Region)**[Go to Product page](#)**2** Images

## Overview

Quantity:	0.4 mL
Target:	Tetraspanin 2 (TSPAN2)
Binding Specificity:	AA 116-145, Middle Region
Reactivity:	Human
Host:	Rabbit
Clonality:	Polyclonal
Conjugate:	This Tetraspanin 2 antibody is un-conjugated
Application:	Western Blotting (WB), Flow Cytometry (FACS), Enzyme Immunoassay (EIA)

## Product Details

Immunogen:	KLH conjugated synthetic peptide between 116~145 amino acids from the Center region of human TSPAN2
Isotype:	Ig Fraction
Specificity:	This antibody detects Tetraspanin-2 (TSPAN2) (Center).
Cross-Reactivity (Details):	Species reactivity (tested):Human
Purification:	Protein A column followed by peptide affinity purification

## Target Details

Target:	Tetraspanin 2 (TSPAN2)
Alternative Name:	Tetraspanin-2 (TSPAN2) ( <a href="#">TSPAN2 Products</a> )

## Target Details

Background: TSPAN2 is a member of the transmembrane 4 superfamily, also known as the tetraspanin family. Most of these members are cell-surface proteins that are characterized by the presence of four hydrophobic domains. The proteins mediate signal transduction events that play a role in the regulation of cell development, activation, growth and motility. Synonyms: Tetraspan NET-3, Tspan-2

Gene ID: 10100

NCBI Accession: [NP\\_005716](#)

## Application Details

Application Notes: Optimal working dilution should be determined by the investigator.

Restrictions: For Research Use only

## Handling

Format: Liquid

Concentration: 0.25 mg/mL

Buffer: PBS with 0.09 % (W/V) sodium azide

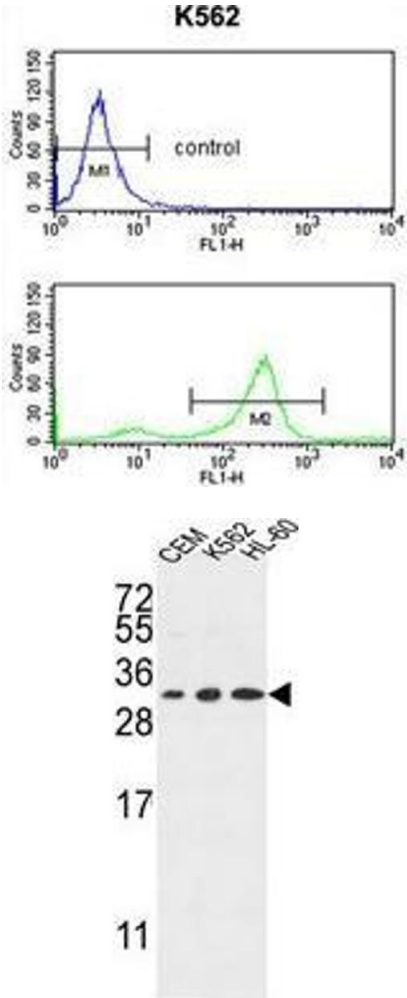
Preservative: Sodium azide

Precaution of Use: This product contains sodium azide: a POISONOUS AND HAZARDOUS SUBSTANCE which should be handled by trained staff only.

Handling Advice: Avoid repeated freezing and thawing.

Storage: 4 °C/-20 °C

Storage Comment: Store at 2 - 8 °C for up to six months or (in aliquots) at -20 °C for longer.



Flow Cytometry

**Image 1.** TSPAN2 Antibody (Center) flow cytometry analysis of K562 cells (bottom histogram) compared to a negative control cell (top histogram). FITC-conjugated goat-anti-rabbit secondary antibodies were used for the analysis.

Western Blotting

**Image 2.** TSPAN2 Antibody (Center) western blot analysis in CEM,K562,HL-60 cell line lysates (35 µg/lane). This demonstrates the TSPAN2 antibody detected the TSPAN2 protein (arrow).