



[Go to Product page](#)

Datasheet for ABIN955177

## anti-TGFBR2 antibody (N-Term)

### 3 Images

#### Overview

Quantity:	0.4 mL
Target:	TGFBR2
Binding Specificity:	AA 20-48, N-Term
Reactivity:	Human, Mouse
Host:	Rabbit
Clonality:	Polyclonal
Conjugate:	This TGFBR2 antibody is un-conjugated
Application:	Western Blotting (WB), Immunofluorescence (IF), Immunohistochemistry (Paraffin-embedded Sections) (IHC (p)), Enzyme Immunoassay (EIA)

#### Product Details

Immunogen:	KLH conjugated synthetic peptide between 20-48 amino acids from the N-terminal region of human TGFBR2
Isotype:	Ig Fraction
Specificity:	This antibody detects TGFBR2 (N-term).
Cross-Reactivity (Details):	Species reactivity (tested):Human, mouse
Purification:	Protein A column followed by peptide affinity purification

#### Target Details

Target:	TGFBR2
---------	--------

## Target Details

---

Alternative Name: [TGFB2 \(TGFB2 Products\)](#)

Background: This gene encodes a member of the Ser/Thr protein kinase family and the TGFB receptor subfamily. The encoded protein is a transmembrane protein that has a protein kinase domain, forms a heterodimeric complex with another receptor protein, and binds TGF-beta. This receptor/ligand complex phosphorylates proteins, which then enter the nucleus and regulate the transcription of a subset of genes related to cell proliferation. Mutations in this gene have been associated with Marfan Syndrome, Loeys-Deitz Aortic Aneurysm Syndrome, and the development of various types of tumors. Alternatively spliced transcript variants encoding different isoforms have been characterized. Synonyms: TGF-beta receptor type II, TGF-beta receptor type-2, TGF-beta type II receptor, TGFR-2, TbetaR-II, Transforming growth factor-beta receptor type II

Gene ID: 7048

NCBI Accession: [NP\\_001020018](#)

## Application Details

---

Application Notes: Optimal working dilution should be determined by the investigator.

Restrictions: For Research Use only

## Handling

---

Format: Liquid

Concentration: 0.4 mg/mL

Buffer: PBS with 0.09 % (W/V) sodium azide

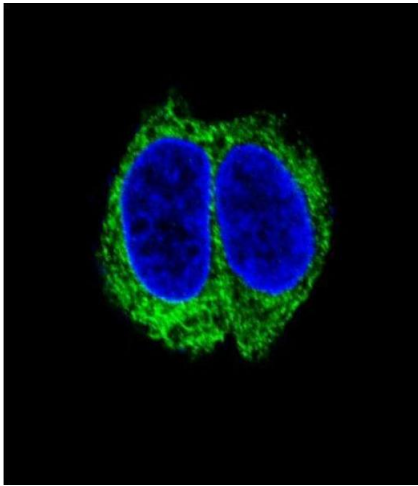
Preservative: Sodium azide

Precaution of Use: This product contains sodium azide: a POISONOUS AND HAZARDOUS SUBSTANCE which should be handled by trained staff only.

Handling Advice: Avoid repeated freezing and thawing.

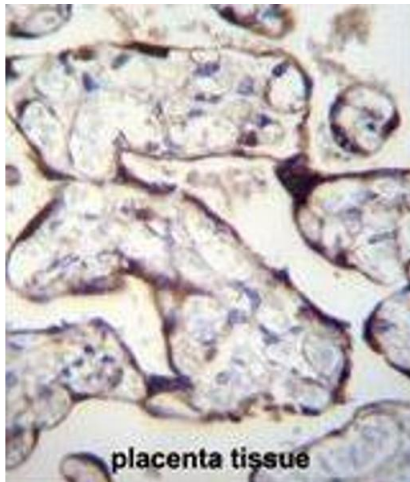
Storage: 4 °C/-20 °C

Storage Comment: Store at 2 - 8 °C for up to six months or (in aliquots) at -20 °C for longer.



### Immunofluorescence

**Image 1.** Confocal immunofluorescent analysis of TGFBR2 Antibody (N-term) with HepG2 cell followed by Alexa Fluor 488-conjugated goat anti-rabbit IgG (green). DAPI was used to stain the cell nuclear (blue).



### Immunohistochemistry (Paraffin-embedded Sections)

**Image 2.** TGFBR2 Antibody (N-term) immunohistochemistry analysis in formalin fixed and paraffin embedded human placenta tissue followed by peroxidase conjugation of the secondary antibody and DAB staining. This data demonstrates the use of TGFBR2 Antibody (N-term) for immunohistochemistry. Clinical relevance has not been evaluated.



### Western Blotting

**Image 3.** TGFBR2 Antibody (N-term) western blot analysis in mouse lung tissue lysates (35 µg/lane). This demonstrates the TGFBR2 antibody detected the TGFBR2 protein (arrow).