

Datasheet for ABIN955179  
**anti-TGIF1 antibody (Middle Region)**[Go to Product page](#)

## 2 Images

## Overview

Quantity:	0.4 mL
Target:	TGIF1
Binding Specificity:	AA 215-245, Middle Region
Reactivity:	Human, Mouse
Host:	Rabbit
Clonality:	Polyclonal
Conjugate:	This TGIF1 antibody is un-conjugated
Application:	Western Blotting (WB), Enzyme Immunoassay (EIA)

## Product Details

Immunogen:	KLH conjugated synthetic peptide between 215-245 amino acids from the Central region of human TGIF1
Isotype:	Ig Fraction
Specificity:	This antibody detects TGIF1 (Center).
Cross-Reactivity (Details):	Species reactivity (tested): Human, mouse
Purification:	Saturated Ammonium Sulfate (SAS) precipitation followed by dialysis against PBS

## Target Details

Target:	TGIF1
Alternative Name:	TGIF1 ( <a href="#">TGIF1 Products</a> )

## Target Details

**Background:** The protein encoded by this gene is a member of the three-amino acid loop extension (TALE) superclass of atypical homeodomains. TALE homeobox proteins are highly conserved transcription regulators. This particular homeodomain binds to a previously characterized retinoid X receptor responsive element from the cellular retinol-binding protein II promoter. In addition to its role in inhibiting 9-cis-retinoic acid-dependent RXR alpha transcription activation of the retinoic acid responsive element, the protein is an active transcriptional co-repressor of SMAD2 and may participate in the transmission of nuclear signals during development and in the adult. Mutations in this gene are associated with holoprosencephaly type 4, which is a structural anomaly of the brain. Alternative splicing has been observed at this locus and eight variants, encoding four distinct isoforms, are described. Synonyms: 5'-TG-3'-interacting factor 1, Homeobox protein TGIF1, TGIF

**Gene ID:** 7050

**NCBI Accession:** [NP\\_003235](#)

**Pathways:** [Retinoic Acid Receptor Signaling Pathway](#), [Chromatin Binding](#), [Tube Formation](#)

## Application Details

**Application Notes:** Optimal working dilution should be determined by the investigator.

**Restrictions:** For Research Use only

## Handling

**Format:** Liquid

**Concentration:** 0.25 mg/mL

**Buffer:** PBS with 0.09 % (W/V) sodium azide

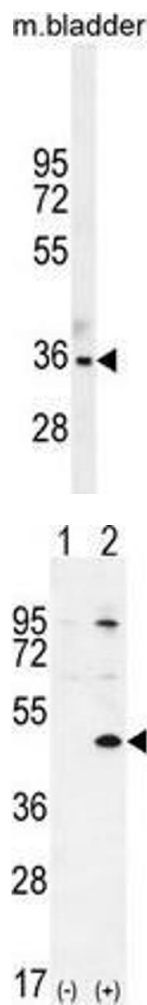
**Preservative:** Sodium azide

**Precaution of Use:** This product contains sodium azide: a POISONOUS AND HAZARDOUS SUBSTANCE which should be handled by trained staff only.

**Handling Advice:** Avoid repeated freezing and thawing.

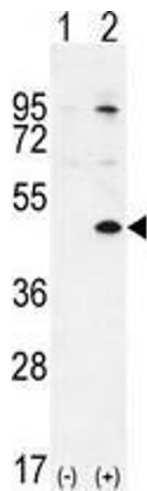
**Storage:** 4 °C/-20 °C

**Storage Comment:** Store at 2 - 8 °C for up to six months or (in aliquots) at -20 °C for longer.



#### Western Blotting

**Image 1.** TGIF1 Antibody (Center L223) western blot analysis in mouse bladder tissue lysates (35 µg/lane). This demonstrates the TGIF1 antibody detected the TGIF1 protein (arrow).



#### Western Blotting

**Image 2.** Western blot analysis of TGIF1 (arrow) using rabbit polyclonal TGIF1 Antibody (Center L223) . 293 cell lysates (2 µg/lane) either nontransfected (Lane 1) or transiently transfected (Lane 2) with the TGIF1 gene.