



[Go to Product page](#)

Datasheet for ABIN955183
anti-THEMIS antibody (C-Term)

2 Images

Overview

Quantity:	0.4 mL
Target:	THEMIS
Binding Specificity:	AA 566-595, C-Term
Reactivity:	Human, Mouse
Host:	Rabbit
Clonality:	Polyclonal
Conjugate:	This THEMIS antibody is un-conjugated
Application:	Western Blotting (WB), Immunohistochemistry (Paraffin-embedded Sections) (IHC (p)), Enzyme Immunoassay (EIA)

Product Details

Immunogen:	KLH conjugated synthetic peptide between 566-595 amino acids from the C-terminal region of human THEMIS
Isotype:	Ig Fraction
Specificity:	This antibody detects THEMIS (C-term).
Cross-Reactivity (Details):	Species reactivity (tested):Human, mouse
Purification:	Protein A column followed by peptide affinity purification

Target Details

Target:	THEMIS
---------	--------

Target Details

Alternative Name: [THEMIS \(THEMIS Products\)](#)

Background: This gene encodes a protein that plays a regulatory role in both positive and negative T-cell selection during late thymocyte development. The protein functions through T-cell antigen receptor signaling, and is necessary for proper lineage commitment and maturation of T-cells. Alternative splicing results in multiple transcript variants. Synonyms: C6orf190, C6orf207, Protein

Gene ID: 387357

NCBI Accession: [NP_001010923](#)

Application Details

Application Notes: Optimal working dilution should be determined by the investigator.

Restrictions: For Research Use only

Handling

Format: Liquid

Concentration: 0.25 mg/mL

Buffer: PBS with 0.09 % (W/V) sodium azide

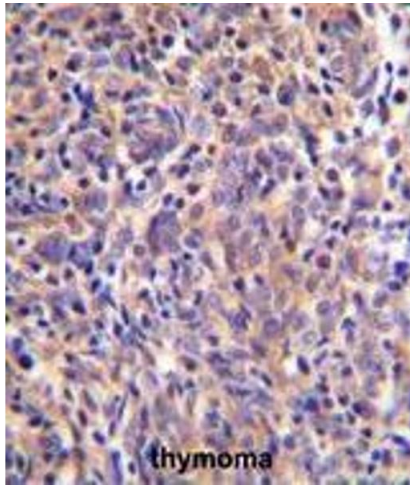
Preservative: Sodium azide

Precaution of Use: This product contains sodium azide: a POISONOUS AND HAZARDOUS SUBSTANCE which should be handled by trained staff only.

Handling Advice: Avoid repeated freezing and thawing.

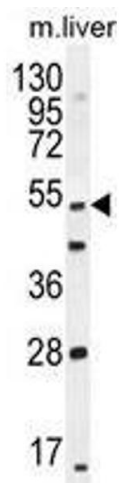
Storage: 4 °C/-20 °C

Storage Comment: Store at 2 - 8 °C for up to six months or (in aliquots) at -20 °C for longer.



Immunohistochemistry (Paraffin-embedded Sections)

Image 1. THEMIS Antibody (C-term) immunohistochemistry analysis in formalin fixed and paraffin embedded human thymoma followed by peroxidase conjugation of the secondary antibody and DAB staining. This data demonstrates the use of THEMIS Antibody (C-term) for immunohistochemistry. Clinical relevance has not been evaluated.



Western Blotting

Image 2. THEMIS Antibody (C-term) western blot analysis in mouse liver tissue lysates (35 µg/lane). This demonstrates the THEMIS antibody detected the THEMIS protein (arrow).