



[Go to Product page](#)

Datasheet for ABIN955196

anti-THUMPD3 antibody (Middle Region)

2 Images

Overview

Quantity:	0.4 mL
Target:	THUMPD3
Binding Specificity:	AA 197-227, Middle Region
Reactivity:	Human
Host:	Rabbit
Clonality:	Polyclonal
Conjugate:	This THUMPD3 antibody is un-conjugated
Application:	Western Blotting (WB), Immunohistochemistry (Paraffin-embedded Sections) (IHC (p)), Enzyme Immunoassay (EIA)

Product Details

Immunogen:	KLH conjugated synthetic peptide between 197-227 amino acids from the Central region of human THUM3
Isotype:	Ig Fraction
Specificity:	This antibody detects THUMPD3 (Center).
Cross-Reactivity (Details):	Species reactivity (tested):Human
Purification:	Protein A column followed by peptide affinity purification

Target Details

Target:	THUMPD3
---------	---------

Target Details

Alternative Name:	THUMPD3 (THUMPD3 Products)
Background:	Synonyms: THUMP domain-containing protein 3
Gene ID:	25917
NCBI Accession:	NP_001107564

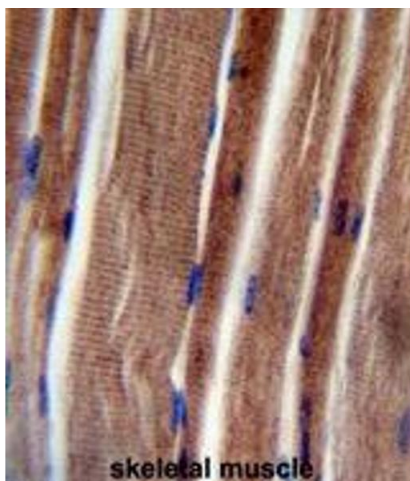
Application Details

Application Notes:	Optimal working dilution should be determined by the investigator.
Restrictions:	For Research Use only

Handling

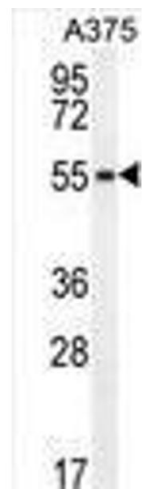
Format:	Liquid
Concentration:	0.25 mg/mL
Buffer:	PBS with 0.09 % (W/V) sodium azide
Preservative:	Sodium azide
Precaution of Use:	This product contains sodium azide: a POISONOUS AND HAZARDOUS SUBSTANCE which should be handled by trained staff only.
Handling Advice:	Avoid repeated freezing and thawing.
Storage:	4 °C/-20 °C
Storage Comment:	Store at 2 - 8 °C for up to six months or (in aliquots) at -20 °C for longer.

Images



Immunohistochemistry (Paraffin-embedded Sections)

Image 1. THUM3 Antibody (Center) immunohistochemistry analysis in formalin fixed and paraffin embedded human skeletal muscle followed by peroxidase conjugation of the secondary antibody and DAB staining. This data demonstrates the use of the THUM3 Antibody (Center) for immunohistochemistry. Clinical relevance has not been evaluated.



Western Blotting

Image 2. THUM3 Antibody (Center) western blot analysis in A375 cell line lysates (35 µg/lane). This demonstrates the THUM3 antibody detected the THUM3 protein (arrow).