

Datasheet for ABIN955210  
**anti-TIFAB antibody (Middle Region)**[Go to Product page](#)

## 1 Image

## Overview

Quantity:	0.4 mL
Target:	TIFAB
Binding Specificity:	AA 40-70, Middle Region
Reactivity:	Human, Mouse
Host:	Rabbit
Clonality:	Polyclonal
Conjugate:	This TIFAB antibody is un-conjugated
Application:	Western Blotting (WB), Enzyme Immunoassay (EIA)

## Product Details

Immunogen:	KLH conjugated synthetic peptide between 40-70 amino acids from the Central region of human TIFAB
Isotype:	Ig Fraction
Specificity:	This antibody detects TIFAB (Center).
Cross-Reactivity (Details):	Species reactivity (tested): Human, mouse
Purification:	Protein A column followed by peptide affinity purification

## Target Details

Target:	TIFAB
Alternative Name:	TIFAB ( <a href="#">TIFAB Products</a> )

## Target Details

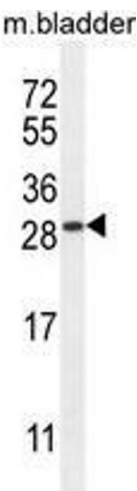
Background:	TIFAB associates with TIFA (MIM 609028) and inhibits TIFA-mediated activation of NF-kappa-B (NFKB1, MIM 164011) (Matsumura et al., 2004 [PubMed 15047173]).Synonyms: TRAF-interacting protein with FHA domain-containing protein B
Gene ID:	497189
NCBI Accession:	<a href="#">NP_001092691</a>

## Application Details

Application Notes:	Optimal working dilution should be determined by the investigator.
Restrictions:	For Research Use only

## Handling

Format:	Liquid
Concentration:	0.25 mg/mL
Buffer:	PBS with 0.09 % (W/V) sodium azide
Preservative:	Sodium azide
Precaution of Use:	This product contains sodium azide: a POISONOUS AND HAZARDOUS SUBSTANCE which should be handled by trained staff only.
Handling Advice:	Avoid repeated freezing and thawing.
Storage:	4 °C/-20 °C
Storage Comment:	Store at 2 - 8 °C for up to six months or (in aliquots) at -20 °C for longer.



Western Blotting

**Image 1.** TIFAB Antibody (Center) western blot analysis in mouse bladder tissue lysates (35 µg/lane). This demonstrates the TIFAB antibody detected the TIFAB protein (arrow).