

Datasheet for ABIN955221  
**anti-TIMP1 antibody (C-Term)**

## 3 Images

[Go to Product page](#)

## Overview

Quantity:	0.4 mL
Target:	TIMP1
Binding Specificity:	AA 164-195, C-Term
Reactivity:	Human
Host:	Rabbit
Clonality:	Polyclonal
Conjugate:	This TIMP1 antibody is un-conjugated
Application:	Western Blotting (WB), Immunohistochemistry (Paraffin-embedded Sections) (IHC (p)), Immunofluorescence (IF), Enzyme Immunoassay (EIA)

## Product Details

Immunogen:	KLH conjugated synthetic peptide between 164-195 amino acids from the C-terminal region of human TIMP1
Isotype:	Ig Fraction
Specificity:	This antibody detects TIMP1 (C-term).
Cross-Reactivity (Details):	Species reactivity (tested):Human
Purification:	Saturated Ammonium Sulfate (SAS) precipitation followed by dialysis against PBS

## Target Details

Target:	TIMP1
---------	-------

## Target Details

Alternative Name: TIMP1 ([TIMP1 Products](#))

Background: This gene belongs to the TIMP gene family. The proteins encoded by this gene family are natural inhibitors of the matrix metalloproteinases (MMPs), a group of peptidases involved in degradation of the extracellular matrix. In addition to its inhibitory role against most of the known MMPs, the encoded protein is able to promote cell proliferation in a wide range of cell types, and may also have an anti-apoptotic function. Transcription of this gene is highly inducible in response to many cytokines and hormones. In addition, the expression from some but not all inactive X chromosomes suggests that this gene inactivation is polymorphic in human females. This gene is located within intron 6 of the synapsin I gene and is transcribed in the opposite direction. Synonyms: CLGI, EPA, Erythroid-potentiating activity, Fibroblast collagenase inhibitor, Metalloproteinase inhibitor 1, TIMP, TIMP-1, Tissue inhibitor of metalloproteinases

Gene ID: 7076

NCBI Accession: [NP\\_003245](#)

## Application Details

Application Notes: Optimal working dilution should be determined by the investigator.

Restrictions: For Research Use only

## Handling

Format: Liquid

Concentration: 0.25 mg/mL

Buffer: PBS with 0.09 % (W/V) sodium azide

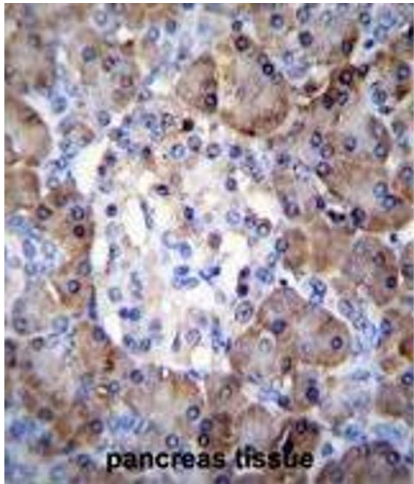
Preservative: Sodium azide

Precaution of Use: This product contains sodium azide: a POISONOUS AND HAZARDOUS SUBSTANCE which should be handled by trained staff only.

Handling Advice: Avoid repeated freezing and thawing.

Storage: 4 °C/-20 °C

Storage Comment: Store at 2 - 8 °C for up to six months or (in aliquots) at -20 °C for longer.



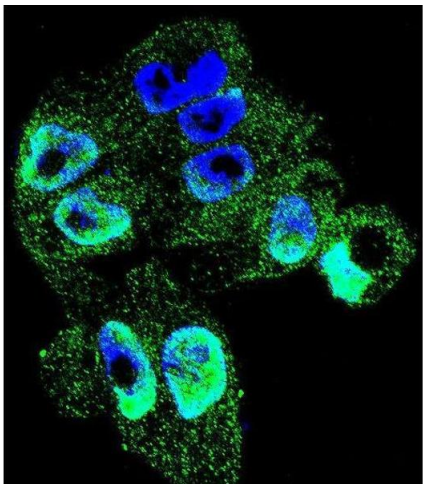
Immunohistochemistry (Paraffin-embedded Sections)

**Image 1.** TIMP1 Antibody (C-term) immunohistochemistry analysis in formalin fixed and paraffin embedded human pancreas tissue followed by peroxidase conjugation of the secondary antibody and DAB staining. This data demonstrates the use of TIMP1 Antibody (C-term) for immunohistochemistry. Clinical relevance has not been evaluated.



Western Blotting

**Image 2.** TIMP1 Antibody (C-term) western blot analysis in CEM cell line lysates (35 µg/lane). This demonstrates the TIMP1 antibody detected the TIMP1 protein (arrow).



Immunofluorescence

**Image 3.** Confocal immunofluorescent analysis of TIMP1 Antibody (C-term) with A2058 cell followed by Alexa Fluor 488-conjugated goat anti-rabbit IgG (green). DAPI was used to stain the cell nuclear (blue).