

Datasheet for ABIN955222  
**anti-TIMP3 antibody (Middle Region)**[Go to Product page](#)

## 3 Images

## Overview

Quantity:	0.4 mL
Target:	TIMP3
Binding Specificity:	AA 119-148, Middle Region
Reactivity:	Human
Host:	Rabbit
Clonality:	Polyclonal
Conjugate:	This TIMP3 antibody is un-conjugated
Application:	Western Blotting (WB), Flow Cytometry (FACS), Immunohistochemistry (Paraffin-embedded Sections) (IHC (p)), Enzyme Immunoassay (EIA)

## Product Details

Immunogen:	KLH conjugated synthetic peptide between 119~148 amino acids from the Center region of human TIMP3
Isotype:	Ig Fraction
Specificity:	This antibody detects TIMP3 (Center).
Cross-Reactivity (Details):	Species reactivity (tested):Human
Purification:	Protein A column followed by peptide affinity purification

## Target Details

Target:	TIMP3
---------	-------

## Target Details

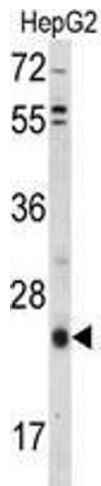
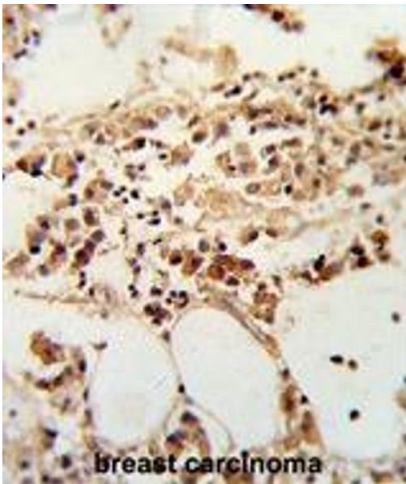
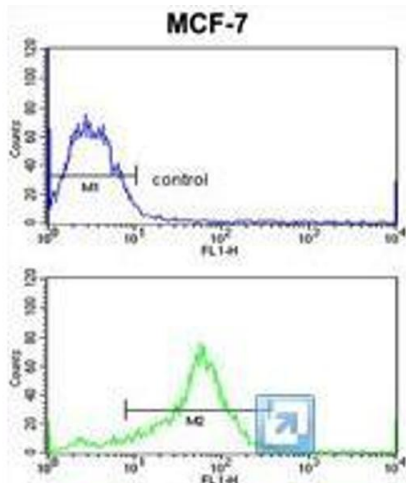
Alternative Name:	TIMP3 ( <a href="#">TIMP3 Products</a> )
Background:	TIMP3 is one of inhibitors of the matrix metalloproteinases, a group of peptidases involved in degradation of the extracellular matrix (ECM).Synonyms: Metalloproteinase inhibitor 3, Protein MIG-5, TIMP-3, Tissue inhibitor of metalloproteinases 3
Gene ID:	7078
NCBI Accession:	<a href="#">NP_000353</a>

## Application Details

Application Notes:	Optimal working dilution should be determined by the investigator.
Restrictions:	For Research Use only

## Handling

Format:	Liquid
Concentration:	0.25 mg/mL
Buffer:	PBS with 0.09 % (W/V) sodium azide
Preservative:	Sodium azide
Precaution of Use:	This product contains sodium azide: a POISONOUS AND HAZARDOUS SUBSTANCE which should be handled by trained staff only.
Handling Advice:	Avoid repeated freezing and thawing.
Storage:	4 °C/-20 °C
Storage Comment:	Store at 2 - 8 °C for up to six months or (in aliquots) at -20 °C for longer.



### Flow Cytometry

**Image 1.** TIMP3 Antibody (Center) flow cytometric analysis of MCF-7 cells (bottom histogram) compared to a negative control cell (top histogram). FITC-conjugated goat-anti-rabbit secondary antibodies were used for the analysis.

### Immunohistochemistry (Paraffin-embedded Sections)

**Image 2.** Formalin-fixed and paraffin-embedded human breast carcinoma reacted with TIMP3 Antibody (Center), which was peroxidase-conjugated to the secondary antibody, followed by DAB staining. This data demonstrates the use of this antibody for immunohistochemistry; clinical relevance has not been evaluated.

### Western Blotting

**Image 3.** Western blot analysis of TIMP3 Antibody (Center) in HepG2 cell line lysates (35 µg/lane). TIMP3 (arrow) was detected using the purified Pab.