

Datasheet for ABIN955234

anti-Tolloid-Like 2 antibody (Middle Region)**2** Images[Go to Product page](#)

Overview

Quantity:	0.4 mL
Target:	Tolloid-Like 2 (TLL2)
Binding Specificity:	AA 305-336, Middle Region
Reactivity:	Human
Host:	Rabbit
Clonality:	Polyclonal
Conjugate:	This Tolloid-Like 2 antibody is un-conjugated
Application:	Immunohistochemistry (Paraffin-embedded Sections) (IHC (p)), Western Blotting (WB), Enzyme Immunoassay (EIA)

Product Details

Immunogen:	KLH conjugated synthetic peptide between 305-336 amino acids from the Central region of human TLL2
Isotype:	Ig Fraction
Specificity:	This antibody detects TLL2 (Center).
Cross-Reactivity (Details):	Species reactivity (tested):Human
Purification:	Saturated Ammonium Sulfate (SAS) precipitation followed by dialysis against PBS

Target Details

Target:	Tolloid-Like 2 (TLL2)
---------	-----------------------

Target Details

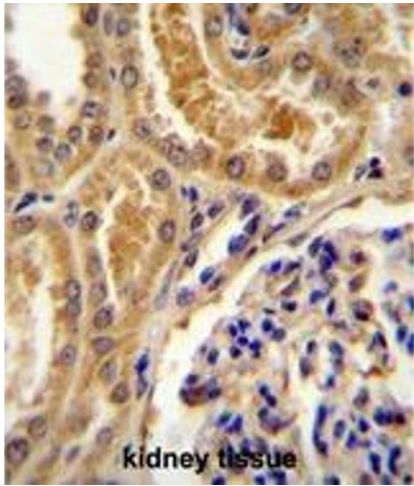
Alternative Name:	TLL2 (TLL2 Products)
Background:	This gene encodes an astacin-like zinc-dependent metalloprotease and is a subfamily member of the metzincin family. Unlike other family members, a similar protein in mice does not cleave procollagen C-propeptides or chordin.Synonyms: KIAA0932, Tolloid-like protein 2
Gene ID:	7093
NCBI Accession:	NP_036597

Application Details

Application Notes:	Optimal working dilution should be determined by the investigator.
Restrictions:	For Research Use only

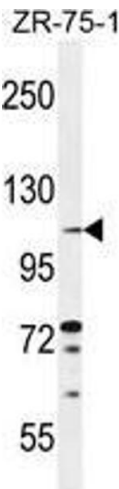
Handling

Format:	Liquid
Concentration:	0.25 mg/mL
Buffer:	PBS with 0.09 % (W/V) sodium azide
Preservative:	Sodium azide
Precaution of Use:	This product contains sodium azide: a POISONOUS AND HAZARDOUS SUBSTANCE which should be handled by trained staff only.
Handling Advice:	Avoid repeated freezing and thawing.
Storage:	4 °C/-20 °C
Storage Comment:	Store at 2 - 8 °C for up to six months or (in aliquots) at -20 °C for longer.



Immunohistochemistry (Paraffin-embedded Sections)

Image 1. TLL2 Antibody (Center) immunohistochemistry analysis in formalin fixed and paraffin embedded human kidney tissue followed by peroxidase conjugation of the secondary antibody and DAB staining. This data demonstrates the use of TLL2 Antibody (Center) for immunohistochemistry. Clinical relevance has not been evaluated.



Western Blotting

Image 2. TLL2 Antibody (Center) western blot analysis in ZR-75-1 cell line lysates (35 µg/lane). This demonstrates the TLL2 antibody detected the TLL2 protein (arrow).