

Datasheet for ABIN955238
anti-TM4SF4 antibody (N-Term)[Go to Product page](#)

2 Images

Overview

Quantity:	0.4 mL
Target:	TM4SF4
Binding Specificity:	N-Term
Reactivity:	Human, Mouse
Host:	Rabbit
Clonality:	Polyclonal
Conjugate:	This TM4SF4 antibody is un-conjugated
Application:	Western Blotting (WB), Enzyme Immunoassay (EIA)

Product Details

Immunogen:	KLH conjugated synthetic peptide selected from the N-terminal region of human T4S4
Isotype:	Ig Fraction
Specificity:	This antibody reacts to T4S4.
Cross-Reactivity (Details):	Species reactivity (tested): Human and Mouse.
Purification:	Affinity chromatography on Protein A

Target Details

Target:	TM4SF4
Alternative Name:	TM4SF4 (TM4SF4 Products)
Background:	T4S4 is a member of the transmembrane 4 superfamily, also known as the tetraspanin family.

Target Details

Most of these members are cell-surface proteins that are characterized by the presence of four hydrophobic domains. The proteins mediate signal transduction events that play a role in the regulation of cell development, activation, growth and motility. This encoded protein is a cell surface glycoprotein that can regulate cell proliferation. The use of alternate polyadenylation sites has been found for this gene. Synonyms: IL-TMP, ILTMP, Intestine and liver tetraspan membrane protein, Transmembrane 4 L6 family member 4

Molecular Weight: 21396 Da

Gene ID: 7104

NCBI Accession: [NP_004608](#)

Application Details

Application Notes: Optimal working dilution should be determined by the investigator.

Restrictions: For Research Use only

Handling

Format: Liquid

Concentration: 0.25 mg/mL

Buffer: PBS, 0.09 % (W/V) sodium azide

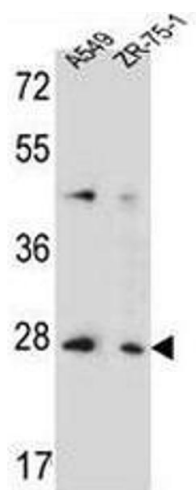
Preservative: Sodium azide

Precaution of Use: This product contains sodium azide: a POISONOUS AND HAZARDOUS SUBSTANCE which should be handled by trained staff only.

Handling Advice: Avoid repeated freezing and thawing.

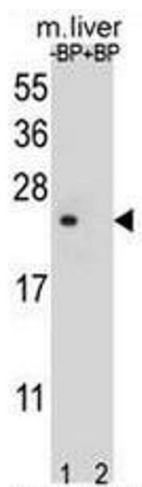
Storage: 4 °C/-20 °C

Storage Comment: Store the antibody undiluted at 2-8 °C for one month or (in aliquots) at -20 °C for longer.



Western Blotting

Image 1. T4S4 Antibody (N-term) western blot analysis in A549,ZR-75-1 cell line lysates (35µg/lane).This demonstrates the T4S4 antibody detected the T4S4 protein (arrow).



Western Blotting

Image 2. Western blot analysis of T4S4 Antibody (N-term) Pab pre-incubated without(lane 1) and with(lane 2) blocking peptide in liver cell line lysate. T4S4 Antibody (N-term) (arrow) was detected using the purified Pab (1:60/250 dilution).