



[Go to Product page](#)

Datasheet for ABIN955240

anti-TM6SF1 antibody (N-Term)

1 Image

Overview

Quantity:	0.4 mL
Target:	TM6SF1
Binding Specificity:	AA 39-68, N-Term
Reactivity:	Human
Host:	Rabbit
Clonality:	Polyclonal
Conjugate:	This TM6SF1 antibody is un-conjugated
Application:	Western Blotting (WB), Enzyme Immunoassay (EIA)

Product Details

Immunogen:	KLH conjugated synthetic peptide between 39-68 amino acids from the N-terminal region of human TM6SF1
Isotype:	Ig Fraction
Specificity:	This antibody detects TM6SF1 (N-term).
Cross-Reactivity (Details):	Species reactivity (tested):Human
Purification:	Protein A column followed by peptide affinity purification

Target Details

Target:	TM6SF1
Alternative Name:	TM6SF1 (TM6SF1 Products)

Target Details

Background: Synonyms: Transmembrane 6 superfamily member 1

Gene ID: 53346

NCBI Accession: [NP_001138375](#)

Application Details

Application Notes: Optimal working dilution should be determined by the investigator.

Restrictions: For Research Use only

Handling

Format: Liquid

Concentration: 0.25 mg/mL

Buffer: PBS with 0.09 % (W/V) sodium azide

Preservative: Sodium azide

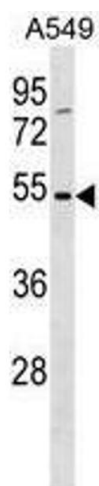
Precaution of Use: This product contains sodium azide: a POISONOUS AND HAZARDOUS SUBSTANCE which should be handled by trained staff only.

Handling Advice: Avoid repeated freezing and thawing.

Storage: 4 °C/-20 °C

Storage Comment: Store at 2 - 8 °C for up to six months or (in aliquots) at -20 °C for longer.

Images



Western Blotting

Image 1. TM6SF1 Antibody (N-term) western blot analysis in A549 cell line lysates (35 µg/lane). This demonstrates the TM6SF1 antibody detected the TM6SF1 protein (arrow).