



Datasheet for ABIN955245
anti-TMED6 antibody (Middle Region)



[Go to Product page](#)

1 Image

Overview

Quantity:	0.4 mL
Target:	TMED6
Binding Specificity:	AA 124-153, Middle Region
Reactivity:	Human
Host:	Rabbit
Clonality:	Polyclonal
Conjugate:	This TMED6 antibody is un-conjugated
Application:	Western Blotting (WB), Enzyme Immunoassay (EIA)

Product Details

Immunogen:	KLH conjugated synthetic peptide between 124-153 amino acids from the Central region of human TMED6
Isotype:	Ig Fraction
Specificity:	This antibody detects TMED6 (Center).
Cross-Reactivity (Details):	Species reactivity (tested):Human
Purification:	Protein A column followed by peptide affinity purification

Target Details

Target:	TMED6
Alternative Name:	TMED6 (TMED6 Products)

Target Details

Background: TMED6 (transmembrane emp24 domain-containing protein 6) is a 240 amino acid single-pass type I membrane protein that belongs to the EMP24/GP25L family and contains one GOLD domain. The gene that encodes TMED6 contains around 8,564 bases and maps to human chromosome 16q22.1. Encoding over 900 genes and consisting of approximately 90 million base pairs, chromosome 16 makes up nearly 3 % of the human genome and is associated with a variety of genetic disorders. The GAN gene is located on chromosome 16 and, when mutated, may lead to giant axonal neuropathy, a nervous system disorder characterized by increasing malfunction with growth. Alterations in the CREB gene and NOD2 gene, both of which are located on chromosome 16, result in Rubinstein-Taybi syndrome and Crohn's disease, respectively. An association with systemic lupus erythematosus and a number of other autoimmune disorders with the pericentromeric region of chromosome 16 has led to the identification of SLC5A11 as a potential autoimmune modifier. Synonyms: Transmembrane emp24 domain-containing protein 6, UNQ9146/PRO34237

Gene ID: 146456

NCBI Accession: [NP_653277](#)

Application Details

Application Notes: Optimal working dilution should be determined by the investigator.

Restrictions: For Research Use only

Handling

Format: Liquid

Concentration: 0.25 mg/mL

Buffer: PBS with 0.09 % (W/V) sodium azide

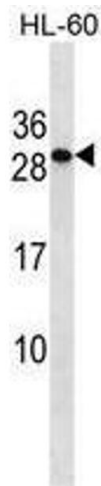
Preservative: Sodium azide

Precaution of Use: This product contains sodium azide: a POISONOUS AND HAZARDOUS SUBSTANCE which should be handled by trained staff only.

Handling Advice: Avoid repeated freezing and thawing.

Storage: 4 °C/-20 °C

Storage Comment: Store at 2 - 8 °C for up to six months or (in aliquots) at -20 °C for longer.



Western Blotting

Image 1. TMED6 Antibody (Center) western blot analysis in HL-60 cell line lysates (35 μ g/lane). This demonstrates the TMED6 antibody detected the TMED6 protein (arrow).