

Datasheet for ABIN955248
anti-LMF2 antibody (C-Term)[Go to Product page](#)

2 Images

Overview

Quantity:	0.4 mL
Target:	LMF2
Binding Specificity:	AA 538-568, C-Term
Reactivity:	Human
Host:	Rabbit
Clonality:	Polyclonal
Conjugate:	This LMF2 antibody is un-conjugated
Application:	Western Blotting (WB), Flow Cytometry (FACS), Enzyme Immunoassay (EIA)

Product Details

Immunogen:	KLH conjugated synthetic peptide between 538-568 amino acids from the C-terminal region of human TMEM112B / TMEM153 Genename: LMF2
Isotype:	Ig Fraction
Specificity:	This antibody recognizes Human TMEM112B / TMEM153 (C-term).
Purification:	Protein A column, followed by peptide affinity purification

Target Details

Target:	LMF2
Alternative Name:	TMEM112B / TMEM153 (LMF2 Products)
Background:	Involved in the maturation of specific proteins in the endoplasmic reticulum. May be required

Target Details

for maturation and transport of active lipoprotein lipase (LPL) through the secretory pathway (By similarity).Synonyms: LMF2, Lipase maturation factor 2, Transmembrane protein 112B, Transmembrane protein 153

Molecular Weight: 79698 Da,

Gene ID: 91289

NCBI Accession: [NP_149977](#)

Application Details

Application Notes: Optimal working dilution should be determined by the investigator.

Restrictions: For Research Use only

Handling

Format: Liquid

Concentration: 0.25 mg/mL

Buffer: PBS containing 0.09 % (W/V) Sodium Azide as preservative

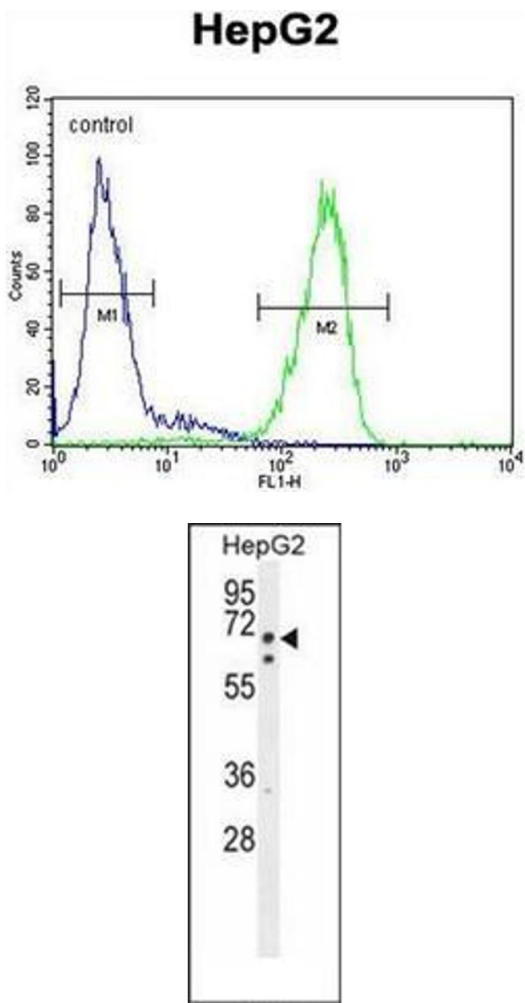
Preservative: Sodium azide

Precaution of Use: This product contains sodium azide: a POISONOUS AND HAZARDOUS SUBSTANCE which should be handled by trained staff only.

Handling Advice: Avoid repeated freezing and thawing.

Storage: 4 °C/-20 °C

Storage Comment: Store undiluted at 2-8 °C for one month or (in aliquots) at -20 °C for longer.



Flow Cytometry

Image 1. Flow cytometric analysis of HepG2 cells using TMEM112B / TMEM153 Antibody (C-term) Cat.- No AP52506PU-N(right histogram) compared to a negative control cell (left histogram). FITC-conjugated goat-anti-rabbit secondary antibodies were used for the analysis.

Western Blotting

Image 2. Western blot analysis of TMEM112B / TMEM153 Antibody (C-term) in HepG2 cell line lysates (35ug/lane). This demonstrates the LMF2 antibody detected the LMF2 protein (arrow).