



[Go to Product page](#)

Datasheet for ABIN955251

## anti-TMEM150A antibody (Middle Region)

### 3 Images

#### Overview

Quantity:	0.4 mL
Target:	TMEM150A
Binding Specificity:	AA 87-117, Middle Region
Reactivity:	Human
Host:	Rabbit
Clonality:	Polyclonal
Conjugate:	This TMEM150A antibody is un-conjugated
Application:	Western Blotting (WB), Immunohistochemistry (Paraffin-embedded Sections) (IHC (p)), Enzyme Immunoassay (EIA)

#### Product Details

Immunogen:	KLH conjugated synthetic peptide between 87~117 amino acids from the Center region of human T150A
Isotype:	Ig Fraction
Specificity:	This antibody reacts to T150A.
Cross-Reactivity (Details):	Species reactivity (tested):Human.
Purification:	Affinity chromatography on Protein A

#### Target Details

Target:	TMEM150A
---------	----------

## Target Details

---

Alternative Name:	TMEM150A ( <a href="#">TMEM150A Products</a> )
Background:	T150A is possible role in fasting-induced catabolism.Synonyms: TMEM150, Transmembrane protein 150, Transmembrane protein 150A
Molecular Weight:	28835 Da
Gene ID:	129303
NCBI Accession:	<a href="#">NP_001026908</a>

## Application Details

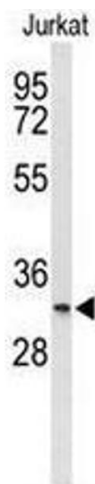
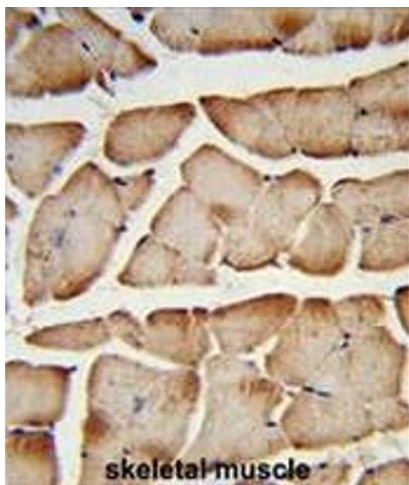
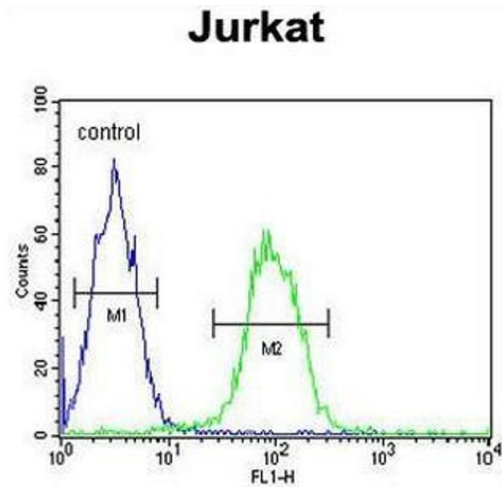
---

Application Notes:	Optimal working dilution should be determined by the investigator.
Restrictions:	For Research Use only

## Handling

---

Format:	Liquid
Concentration:	0.25 mg/mL
Buffer:	PBS, 0.09 % (W/V) sodium azide
Preservative:	Sodium azide
Precaution of Use:	This product contains sodium azide: a POISONOUS AND HAZARDOUS SUBSTANCE which should be handled by trained staff only.
Handling Advice:	Avoid repeated freezing and thawing.
Storage:	4 °C/-20 °C
Storage Comment:	Store the antibody undiluted at 2-8 °C for one month or (in aliquots) at -20 °C for longer.



### Flow Cytometry

**Image 1.** T150A Antibody (Center) flow cytometric analysis of Jurkat cells (right histogram) compared to a negative control cell (left histogram). FITC-conjugated goat-anti-rabbit secondary antibodies were used for the analysis.

### Immunohistochemistry (Paraffin-embedded Sections)

**Image 2.** Formalin-fixed and paraffin-embedded human skeletal muscle reacted with T150A Antibody (Center), which was peroxidase-conjugated to the secondary antibody, followed by DAB staining. This data demonstrates the use of this antibody for immunohistochemistry; clinical relevance has not been evaluated.

### Western Blotting

**Image 3.** Western blot analysis of T150A Antibody (Center) in Jurkat cell line lysates (35µg/lane). T150A (arrow) was detected using the purified Pab.