

Datasheet for ABIN955255

anti-CNPY2/MSAP antibody (C-Term)[Go to Product page](#)**2** Images

Overview

Quantity:	0.4 mL
Target:	CNPY2/MSAP (CNPY2)
Binding Specificity:	AA 140-170, C-Term
Reactivity:	Human
Host:	Rabbit
Clonality:	Polyclonal
Conjugate:	This CNPY2/MSAP antibody is un-conjugated
Application:	Western Blotting (WB), Flow Cytometry (FACS), Enzyme Immunoassay (EIA)

Product Details

Immunogen:	KLH conjugated synthetic peptide between amino acids 140-170 from the C-terminal region of human CNPY
Isotype:	Ig Fraction
Specificity:	This antibody reacts to CNPY2.
Cross-Reactivity (Details):	Species reactivity (tested):Human.
Purification:	Affinity chromatography on Protein A

Target Details

Target:	CNPY2/MSAP (CNPY2)
Alternative Name:	TMEM4 / CNPY2 (CNPY2 Products)

Target Details

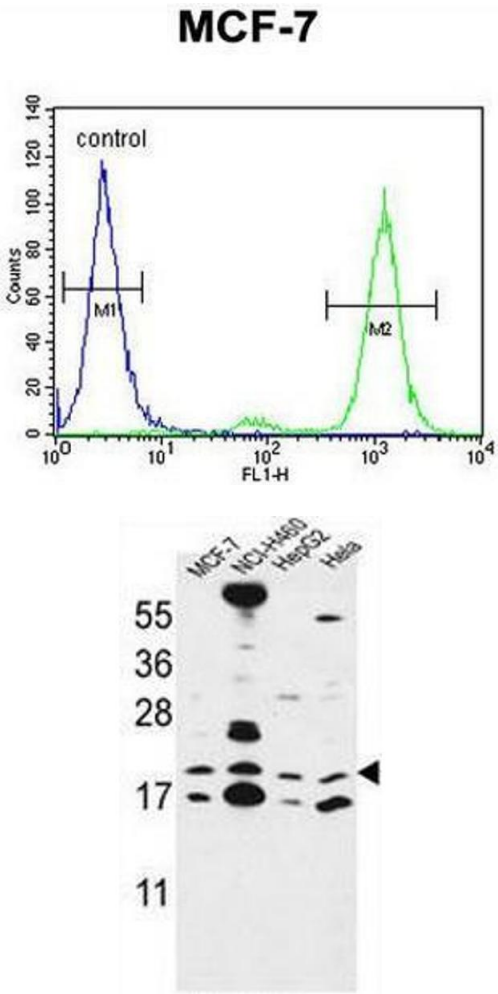
Background:	CNPY2 is positive regulator of neurite outgrowth by stabilizing myosin regulatory light chain (MRLC). It prevents MIR-mediated MRLC ubiquitination and its subsequent proteasomal degradation.Synonyms: Canopy homolog 2, MIR-interacting saposin-like protein, MSAP, Putative secreted protein ZSIG9, Transmembrane protein 4, ZSIG9
Molecular Weight:	20652 Da
Gene ID:	10330
NCBI Accession:	NP_001177920

Application Details

Application Notes:	Optimal working dilution should be determined by the investigator.
Restrictions:	For Research Use only

Handling

Format:	Liquid
Concentration:	0.25 mg/mL
Buffer:	PBS, 0.09 % (W/V) sodium azide
Preservative:	Sodium azide
Precaution of Use:	This product contains sodium azide: a POISONOUS AND HAZARDOUS SUBSTANCE which should be handled by trained staff only.
Handling Advice:	Avoid repeated freezing and thawing.
Storage:	4 °C/-20 °C
Storage Comment:	Store undiluted at 2-8 °C for one month or (in aliquots) at -20 °C for longer.



Flow Cytometry

Image 1. CNPY2 Antibody (C-term) flow cytometric analysis of MCF-7 cells (right histogram) compared to a negative control cell (left histogram).FITC-conjugated goat-anti-rabbit secondary antibodies were used for the analysis.

Western Blotting

Image 2. CNPY2 Antibody (C-term) western blot analysis in MCF-7,NCI-H460,HepG2,Hela cell line lysates (35µg/lane).This demonstrates the CNPY2 antibody detected the CNPY2 protein (arrow).