



[Go to Product page](#)

Datasheet for ABIN955258
anti-TMIE antibody (Middle Region)

1 Image

Overview

Quantity:	0.4 mL
Target:	TMIE
Binding Specificity:	AA 78-108, Middle Region
Reactivity:	Human
Host:	Rabbit
Clonality:	Polyclonal
Conjugate:	This TMIE antibody is un-conjugated
Application:	Western Blotting (WB), Enzyme Immunoassay (EIA)

Product Details

Immunogen:	KLH conjugated synthetic peptide between 78~108 amino acids from the Central region of human TMIE
Isotype:	Ig Fraction
Specificity:	This antibody detects TMIE (Center).
Cross-Reactivity (Details):	Species reactivity (tested):Human
Purification:	Protein A column followed by peptide affinity purification

Target Details

Target:	TMIE
Alternative Name:	TMIE (TMIE Products)

Target Details

Background: This gene encodes a transmembrane inner ear protein. Studies in mouse suggest that this gene is required for normal postnatal maturation of sensory hair cells in the cochlea, including correct development of stereocilia bundles. This gene is one of multiple genes responsible for recessive non-syndromic deafness (DFNB), also known as autosomal recessive nonsyndromic hearing loss (ARNSHL), the most common form of congenitally acquired inherited hearing impairment. Synonyms: Transmembrane inner ear expressed protein

Gene ID: 259236

NCBI Accession: [NP_671729](#)

Pathways: [Sensory Perception of Sound](#)

Application Details

Application Notes: Optimal working dilution should be determined by the investigator.

Restrictions: For Research Use only

Handling

Format: Liquid

Concentration: 0.25 mg/mL

Buffer: PBS with 0.09 % (W/V) sodium azide

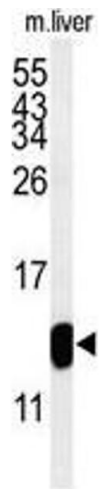
Preservative: Sodium azide

Precaution of Use: This product contains sodium azide: a POISONOUS AND HAZARDOUS SUBSTANCE which should be handled by trained staff only.

Handling Advice: Avoid repeated freezing and thawing.

Storage: 4 °C/-20 °C

Storage Comment: Store at 2 - 8 °C for up to six months or (in aliquots) at -20 °C for longer.



Western Blotting

Image 1. Western blot analysis of TMIE Antibody (Center) in mouse liver tissue lysates (35 μ g/lane). TMIE (arrow) was detected using the purified Pab.