

Datasheet for ABIN955278

anti-TNFSF15 antibody (Middle Region)[Go to Product page](#)**2** Images

Overview

| | |
|----------------------|--|
| Quantity: | 0.4 mL |
| Target: | TNFSF15 |
| Binding Specificity: | AA 155-183, Middle Region |
| Reactivity: | Human |
| Host: | Rabbit |
| Clonality: | Polyclonal |
| Conjugate: | This TNFSF15 antibody is un-conjugated |
| Application: | Western Blotting (WB), Immunofluorescence (IF), Enzyme Immunoassay (EIA) |

Product Details

| | |
|-----------------------------|---|
| Immunogen: | KLH conjugated synthetic peptide between 155-183 amino acids from the Central region of human TNFSF15 |
| Isotype: | Ig Fraction |
| Specificity: | This antibody detects TNFSF15 (Center). |
| Cross-Reactivity (Details): | Species reactivity (tested):Human |
| Purification: | Protein A column followed by peptide affinity purification |

Target Details

| | |
|-------------------|--|
| Target: | TNFSF15 |
| Alternative Name: | TNFSF15 (TNFSF15 Products) |

Target Details

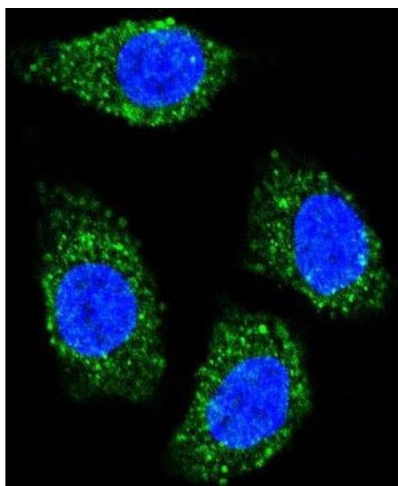
| | |
|-----------------|---|
| Background: | The protein encoded by this gene is a cytokine that belongs to the tumor necrosis factor (TNF) ligand family. This protein is abundantly expressed in endothelial cells, but is not expressed in either B or T cells. The expression of this protein is inducible by TNF and IL-1 alpha. This cytokine is a ligand for receptor TNFRSF25 and decoy receptor TNFRSF21/DR6. It can activate NF-kappaB and MAP kinases, and acts as an autocrine factor to induce apoptosis in endothelial cells. This cytokine is also found to inhibit endothelial cell proliferation, and thus may function as an angiogenesis inhibitor. An additional isoform encoded by an alternatively spliced transcript variant has been reported but the sequence of this transcript has not been determined.Synonyms: TL1, TL1A, TNF ligand-related molecule 1, Tumor necrosis factor ligand superfamily member 15, VEGI, Vascular endothelial cell growth inhibitor |
| Gene ID: | 9966 |
| NCBI Accession: | NP_001191273 |
| Pathways: | Positive Regulation of Endopeptidase Activity , Autophagy |

Application Details

| | |
|--------------------|--|
| Application Notes: | Optimal working dilution should be determined by the investigator. |
| Restrictions: | For Research Use only |

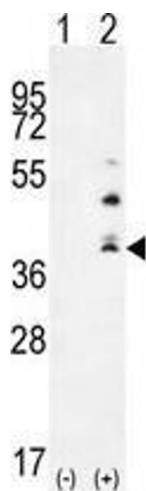
Handling

| | |
|--------------------|--|
| Format: | Liquid |
| Concentration: | 0.25 mg/mL |
| Buffer: | PBS with 0.09 % (W/V) sodium azide |
| Preservative: | Sodium azide |
| Precaution of Use: | This product contains sodium azide: a POISONOUS AND HAZARDOUS SUBSTANCE which should be handled by trained staff only. |
| Handling Advice: | Avoid repeated freezing and thawing. |
| Storage: | 4 °C/-20 °C |
| Storage Comment: | Store at 2 - 8 °C for up to six months or (in aliquots) at -20 °C for longer. |



Immunofluorescence

Image 1. Confocal immunofluorescent analysis of TNFSF15 Antibody (Center) with Hela cell followed by Alexa Fluor® 489-conjugated goat anti-rabbit IgG (green). DAPI was used to stain the cell nuclear (blue).



Western Blotting

Image 2. Western blot analysis of TNFSF15 (arrow) using rabbit polyclonal TNFSF15 Antibody (Center) . 293 cell lysates (2 ug/lane) either nontransfected (Lane 1) or transiently transfected (Lane 2) with the TNFSF15 gene.