

Datasheet for ABIN955287  
**anti-TOMM20L antibody (N-Term)**



[Go to Product page](#)

1 Image

### Overview

Quantity:	0.4 mL
Target:	TOMM20L
Binding Specificity:	AA 22-52, N-Term
Reactivity:	Human
Host:	Rabbit
Clonality:	Polyclonal
Conjugate:	This TOMM20L antibody is un-conjugated
Application:	Western Blotting (WB), Enzyme Immunoassay (EIA)

### Product Details

Immunogen:	KLH conjugated synthetic peptide between 22-52 amino acids from the N-terminal region of human TOMM20L
Isotype:	Ig Fraction
Specificity:	This antibody detects TOMM20L (N-term).
Cross-Reactivity (Details):	Species reactivity (tested):Human
Purification:	Protein A column followed by peptide affinity purification

### Target Details

Target:	TOMM20L
Alternative Name:	TOMM20L ( <a href="#">TOMM20L Products</a> )

## Target Details

Background: Synonyms: TOMM20-like protein 1

Gene ID: 387990

NCBI Accession: [NP\\_997260](#)

## Application Details

Application Notes: Optimal working dilution should be determined by the investigator.

Restrictions: For Research Use only

## Handling

Format: Liquid

Concentration: 0.25 mg/mL

Buffer: PBS with 0.09 % (W/V) sodium azide

Preservative: Sodium azide

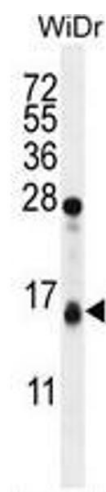
Precaution of Use: This product contains sodium azide: a POISONOUS AND HAZARDOUS SUBSTANCE which should be handled by trained staff only.

Handling Advice: Avoid repeated freezing and thawing.

Storage: 4 °C/-20 °C

Storage Comment: Store at 2 - 8 °C for up to six months or (in aliquots) at -20 °C for longer.

## Images



### Western Blotting

**Image 1.** TOMM20L Antibody (N-term) western blot analysis in WiDr cell line lysates (35 µg/lane). This demonstrates the TOMM20L antibody detected the TOMM20L protein (arrow).