

Datasheet for ABIN955295
anti-TOR1B antibody (C-Term)

2 Images

[Go to Product page](#)

Overview

Quantity:	0.4 mL
Target:	TOR1B
Binding Specificity:	AA 214-243, C-Term
Reactivity:	Human
Host:	Rabbit
Clonality:	Polyclonal
Application:	Western Blotting (WB), Immunohistochemistry (Paraffin-embedded Sections) (IHC (p)), Enzyme Immunoassay (EIA)

Product Details

Immunogen:	KLH conjugated synthetic peptide between 214-243 amino acids from the C-terminal region of human TOR1B
Isotype:	Ig Fraction
Specificity:	This antibody detects Torsin-1B (TOR1B) (C-term).
Cross-Reactivity (Details):	Species reactivity (tested):Human
Purification:	Protein A column followed by peptide affinity purification

Target Details

Target:	TOR1B
Alternative Name:	Torsin-1B (TOR1B) (TOR1B Products)

Target Details

Background:	TOR1B may serve as a molecular chaperone assisting in the proper folding of secreted and/or membrane proteins (By similarity).Synonyms: Torsin family 1 member B
Gene ID:	27348
NCBI Accession:	NP_055321

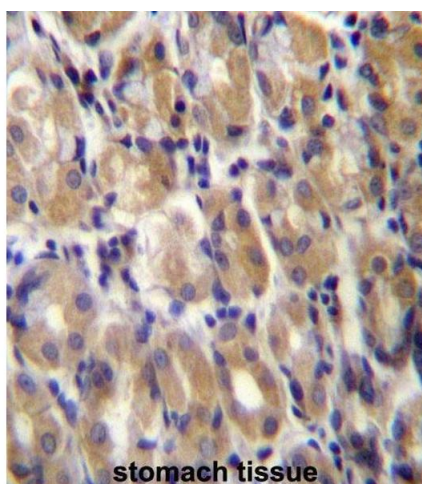
Application Details

Application Notes:	Optimal working dilution should be determined by the investigator.
Restrictions:	For Research Use only

Handling

Format:	Liquid
Concentration:	0.25 mg/mL
Buffer:	PBS with 0.09 % (W/V) sodium azide
Preservative:	Sodium azide
Precaution of Use:	This product contains sodium azide: a POISONOUS AND HAZARDOUS SUBSTANCE which should be handled by trained staff only.
Handling Advice:	Avoid repeated freezing and thawing.
Storage:	4 °C/-20 °C
Storage Comment:	Store at 2 - 8 °C for up to six months or (in aliquots) at -20 °C for longer.

Images



Immunohistochemistry (Paraffin-embedded Sections)

Image 1. TOR1B Antibody (C-term) immunohistochemistry analysis in formalin fixed and paraffin embedded human stomach tissue followed by peroxidase conjugation of the secondary antibody and DAB staining. This data demonstrates the use of TOR1B Antibody (C-term) for immunohistochemistry. Clinical relevance has not been evaluated.



Western Blotting

Image 2. TOR1B Antibody (C-term) western blot analysis in 293 cell line lysates (35 µg/lane). This demonstrates the TOR1B antibody detected the TOR1B protein (arrow).