

Datasheet for ABIN955338
anti-TRPC4 antibody (C-Term)



[Go to Product page](#)

1 Image

Overview

Quantity:	0.4 mL
Target:	TRPC4
Binding Specificity:	AA 811-840, C-Term
Reactivity:	Human
Host:	Rabbit
Clonality:	Polyclonal
Conjugate:	This TRPC4 antibody is un-conjugated
Application:	Western Blotting (WB), Enzyme Immunoassay (EIA)

Product Details

Immunogen:	KLH conjugated synthetic peptide between 811-840 amino acids from the C-terminal region of human TRPC4
Isotype:	Ig Fraction
Specificity:	This antibody detects TRPC4 / TRP4 (C-term).
Cross-Reactivity (Details):	Species reactivity (tested):Human
Purification:	Protein A column followed by peptide affinity purification

Target Details

Target:	TRPC4
Alternative Name:	TRPC4 (TRPC4 Products)

Target Details

Background: Form a receptor-activated non-selective calcium permeant cation channel. Acts as a cell-cell contact-dependent endothelial calcium entry channel. Probably operated by a phosphatidylinositol second messenger system activated by receptor tyrosine kinases or G-protein coupled receptors. Mediates cation entry, with an enhanced permeability to barium over calcium. May also be activated by intracellular calcium store depletion. Synonyms: CCE1, Capacitative calcium entry channel 1, Short transient receptor potential channel 4, TRP-4, Trp-related protein 4

Gene ID: 7223

NCBI Accession: [NP_001129427](#)

Application Details

Application Notes: Optimal working dilution should be determined by the investigator.

Restrictions: For Research Use only

Handling

Format: Liquid

Concentration: 0.25 mg/mL

Buffer: PBS with 0.09 % (W/V) sodium azide

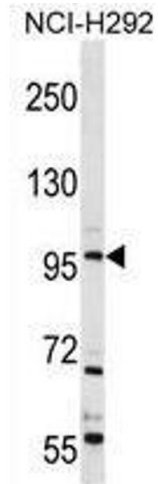
Preservative: Sodium azide

Precaution of Use: This product contains sodium azide: a POISONOUS AND HAZARDOUS SUBSTANCE which should be handled by trained staff only.

Handling Advice: Avoid repeated freezing and thawing.

Storage: 4 °C/-20 °C

Storage Comment: Store at 2 - 8 °C for up to six months or (in aliquots) at -20 °C for longer.



Western Blotting

Image 1. TRPC4 Antibody (C-term) western blot analysis in NCI-H292 cell line lysates (35 µg/lane). This demonstrates the TRPC4 antibody detected the TRPC4 protein (arrow).