



[Go to Product page](#)

Datasheet for ABIN955345

anti-TRUB1 antibody (Middle Region)

2 Images

Overview

| | |
|----------------------|--|
| Quantity: | 0.4 mL |
| Target: | TRUB1 |
| Binding Specificity: | AA 159-188, Middle Region |
| Reactivity: | Human |
| Host: | Rabbit |
| Clonality: | Polyclonal |
| Conjugate: | This TRUB1 antibody is un-conjugated |
| Application: | Western Blotting (WB), Immunohistochemistry (Paraffin-embedded Sections) (IHC (p)), Enzyme Immunoassay (EIA) |

Product Details

| | |
|-----------------------------|---|
| Immunogen: | KLH conjugated synthetic peptide between 159-188 amino acids from the Central region of human TRUB1 |
| Isotype: | Ig Fraction |
| Specificity: | This antibody detects TRUB1 (Center). |
| Cross-Reactivity (Details): | Species reactivity (tested):Human |
| Purification: | Protein A column followed by peptide affinity purification |

Target Details

| | |
|---------|-------|
| Target: | TRUB1 |
|---------|-------|

Target Details

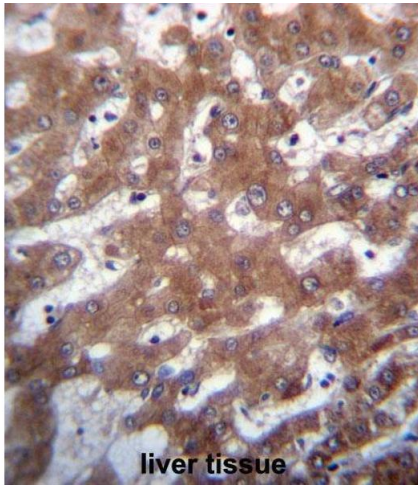
| | |
|-------------------|--|
| Alternative Name: | TRUB1 (TRUB1 Products) |
| Background: | Pseudouridine is an abundant component of rRNAs and tRNAs and is enzymatically generated by isomerization of uridine by pseudouridine synthase (Zucchini et al., 2003 [PubMed 12736709])Synonyms: PUS4, Probable tRNA pseudouridine synthase 1 |
| Gene ID: | 142940 |
| NCBI Accession: | NP_631908 |

Application Details

| | |
|--------------------|--|
| Application Notes: | Optimal working dilution should be determined by the investigator. |
| Restrictions: | For Research Use only |

Handling

| | |
|--------------------|--|
| Format: | Liquid |
| Concentration: | 0.25 mg/mL |
| Buffer: | PBS with 0.09 % (W/V) sodium azide |
| Preservative: | Sodium azide |
| Precaution of Use: | This product contains sodium azide: a POISONOUS AND HAZARDOUS SUBSTANCE which should be handled by trained staff only. |
| Handling Advice: | Avoid repeated freezing and thawing. |
| Storage: | 4 °C/-20 °C |
| Storage Comment: | Store at 2 - 8 °C for up to six months or (in aliquots) at -20 °C for longer. |



Immunohistochemistry (Paraffin-embedded Sections)

Image 1. TRUB1 Antibody (Center) immunohistochemistry analysis in formalin fixed and paraffin embedded human liver tissue followed by peroxidase conjugation of the secondary antibody and DAB staining. This data demonstrates the use of TRUB1 Antibody (Center) for immunohistochemistry. Clinical relevance has not been evaluated.



Western Blotting

Image 2. TRUB1 Antibody (Center) western blot analysis in UM cell line lysates (35 µg/lane). This demonstrates the TRUB1 antibody detected the TRUB1 protein (arrow).