

Datasheet for ABIN955347  
**anti-PRSS3 antibody (Middle Region)**[Go to Product page](#)

## 3 Images

## Overview

Quantity:	0.4 mL
Target:	PRSS3
Binding Specificity:	AA 143-171, Middle Region
Reactivity:	Human
Host:	Rabbit
Clonality:	Polyclonal
Conjugate:	This PRSS3 antibody is un-conjugated
Application:	Western Blotting (WB), Flow Cytometry (FACS), Immunohistochemistry (Paraffin-embedded Sections) (IHC (p)), Enzyme Immunoassay (EIA)

## Product Details

Immunogen:	KLH conjugated synthetic peptide between 143-171 amino acids from the Central region of Human Trypsin-3 / PRSS3 Genename: PRSS3
Isotype:	Ig Fraction
Specificity:	This antibody recognizes Human Trypsin-3 / PRSS3 (Center).
Purification:	Affinity Chromatography on Protein A

## Target Details

Target:	PRSS3
Alternative Name:	Trypsin-3 / PRSS3 ( <a href="#">PRSS3 Products</a> )

## Target Details

**Background:** This gene encodes a trypsinogen, which is a member of the trypsin family of serine proteases. This enzyme is expressed in the brain and pancreas and is resistant to common trypsin inhibitors. It is active on peptide linkages involving the carboxyl group of lysine or arginine. This gene is localized to the locus of T cell receptor beta variable orphans on chromosome 9. Four transcript variants encoding different isoforms have been described for this gene. Synonyms: Brain trypsinogen, Mesotrypsinogen, PRSS4, Serine protease 3, Serine protease 4, TRY3, TRY4, Trypsin III, Trypsin IV

**Molecular Weight:** 32529 Da

**Gene ID:** 5646

**NCBI Accession:** [NP\\_002762](#)

## Application Details

**Application Notes:** Optimal working dilution should be determined by the investigator.

**Restrictions:** For Research Use only

## Handling

**Format:** Liquid

**Concentration:** 0.25 mg/mL

**Buffer:** PBS containing 0.09 % (W/V) sodium azide as preservative

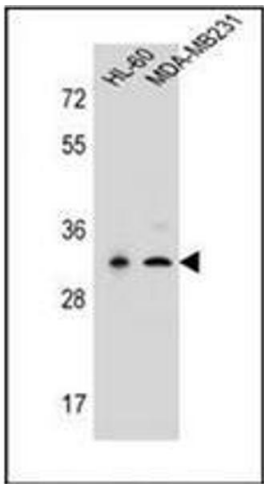
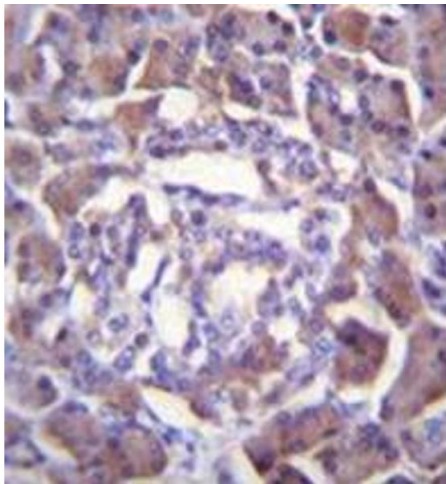
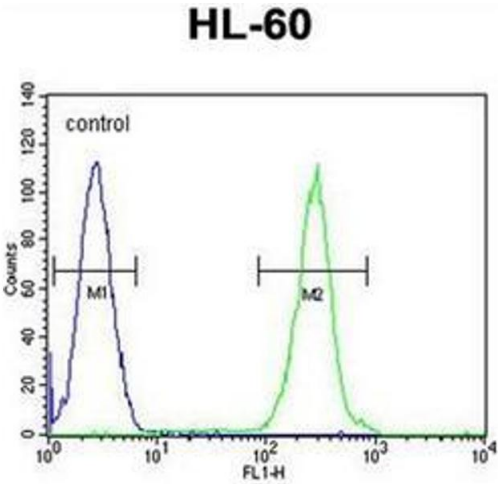
**Preservative:** Sodium azide

**Precaution of Use:** This product contains sodium azide: a POISONOUS AND HAZARDOUS SUBSTANCE which should be handled by trained staff only.

**Handling Advice:** Avoid repeated freezing and thawing.

**Storage:** 4 °C/-20 °C

**Storage Comment:** Store undiluted at 2-8 °C for one month or (in aliquots) at -20 °C for longer.



**Flow Cytometry**

**Image 1.** Flow cytometric analysis of HL-60 cells using RSS3 Antibody (Center) Cat.-No AP53469PU-N (right histogram) compared to a negative control cell (left histogram). FITC-conjugated goat-anti-rabbit secondary antibodies were used for the analysis.

**Immunohistochemistry (Paraffin-embedded Sections)**

**Image 2.** Formalin fixed and paraffin embedded human pancreas tissue reacted with RSS3 Antibody (Center) followed by peroxidase conjugation of the secondary antibody and DAB staining.

**Western Blotting**

**Image 3.** Western blot analysis of PRSS3 Antibody (Center) in HL-60, MDA-MB231 cell line lysates (35ug/lane). This demonstrates the PRSS3 antibody detected the PRSS3 protein (arrow).