



[Go to Product page](#)

Datasheet for ABIN955362

## anti-TSPY-Like 6 antibody (Middle Region)

### 4 Images

#### Overview

Quantity:	0.4 mL
Target:	TSPY-Like 6 (TSPYL6)
Binding Specificity:	AA 213-243, Middle Region
Reactivity:	Human
Host:	Rabbit
Clonality:	Polyclonal
Application:	Western Blotting (WB), Flow Cytometry (FACS), Immunofluorescence (IF), Immunohistochemistry (Paraffin-embedded Sections) (IHC (p)), Enzyme Immunoassay (EIA)

#### Product Details

Immunogen:	KLH conjugated synthetic peptide between 213-243 amino acids from the Central region of human TSPYL6
Isotype:	Ig Fraction
Specificity:	This antibody detects TSPYL6 (Center).
Cross-Reactivity (Details):	Species reactivity (tested):Human
Purification:	Protein A column followed by peptide affinity purification

#### Target Details

Target:	TSPY-Like 6 (TSPYL6)
Alternative Name:	TSPYL6 ( <a href="#">TSPYL6 Products</a> )

## Target Details

Background: Synonyms: TSPY-like protein 6, Testis-specific Y-encoded-like protein 6

Gene ID: 388951

NCBI Accession: [NP\\_001003937](#)

## Application Details

Application Notes: Optimal working dilution should be determined by the investigator.

Restrictions: For Research Use only

## Handling

Format: Liquid

Concentration: 0.25 mg/mL

Buffer: PBS with 0.09 % (W/V) sodium azide

Preservative: Sodium azide

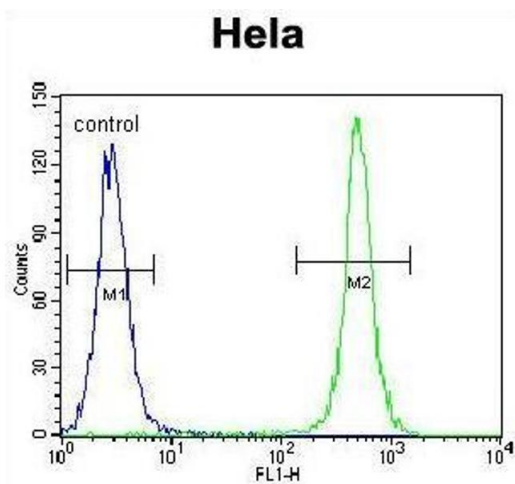
Precaution of Use: This product contains sodium azide: a POISONOUS AND HAZARDOUS SUBSTANCE which should be handled by trained staff only.

Handling Advice: Avoid repeated freezing and thawing.

Storage: 4 °C/-20 °C

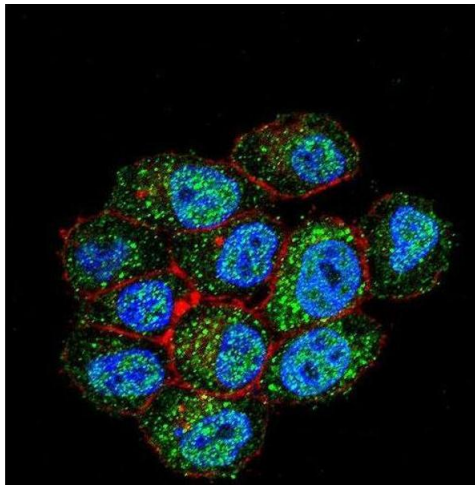
Storage Comment: Store at 2 - 8 °C for up to six months or (in aliquots) at -20 °C for longer.

## Images



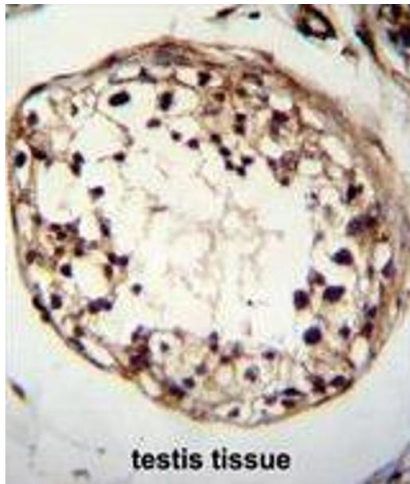
### Flow Cytometry

**Image 1.** TSPYL6 Antibody (Center) flow cytometric analysis of HeLa cells (right histogram) compared to a negative control cell (left histogram). FITC-conjugated goat-anti-rabbit secondary antibodies were used for the analysis.



### Immunofluorescence

**Image 2.** Confocal immunofluorescent analysis of TSPYL6 Antibody (Center) with HeLa cell followed by Alexa Fluor 488-conjugated goat anti-rabbit IgG (green). Actin filaments have been labeled with Alexa Fluor 555 phalloidin (red). DAPI was used to stain the cell nuclear (blue).



### Immunohistochemistry (Paraffin-embedded Sections)

**Image 3.** TSPYL6 Antibody (Center) immunohistochemistry analysis in formalin fixed and paraffin embedded human testis tissue followed by peroxidase conjugation of the secondary antibody and DAB staining. This data demonstrates the use of TSPYL6 Antibody (Center) for immunohistochemistry. Clinical relevance has not been evaluated.

Please check the [product details page](#) for more images. Overall 4 images are available for ABIN955362.