



Datasheet for ABIN955370
anti-TTC23 antibody (Middle Region)



[Go to Product page](#)

1 Image

Overview

Quantity:	0.4 mL
Target:	TTC23
Binding Specificity:	AA 136-165, Middle Region
Reactivity:	Human
Host:	Rabbit
Clonality:	Polyclonal
Conjugate:	This TTC23 antibody is un-conjugated
Application:	Western Blotting (WB), Enzyme Immunoassay (EIA)

Product Details

Immunogen:	KLH conjugated synthetic peptide between 136-165 amino acids from the Central region of human TTC23
Isotype:	Ig Fraction
Specificity:	This antibody detects TTC23 (Center).
Cross-Reactivity (Details):	Species reactivity (tested):Human
Purification:	Protein A column followed by peptide affinity purification

Target Details

Target:	TTC23
Alternative Name:	TTC23 (TTC23 Products)

Target Details

Background:	Synonyms: Cervical cancer proto-oncogene 8 protein, HCC-8, HCC8, TPR repeat protein 23, Tetratricopeptide repeat protein 23
Gene ID:	64927
NCBI Accession:	NP_001035745

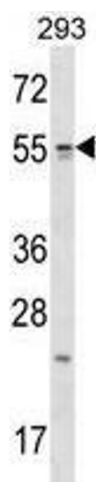
Application Details

Application Notes:	Optimal working dilution should be determined by the investigator.
Restrictions:	For Research Use only

Handling

Format:	Liquid
Concentration:	0.25 mg/mL
Buffer:	PBS with 0.09 % (W/V) sodium azide
Preservative:	Sodium azide
Precaution of Use:	This product contains sodium azide: a POISONOUS AND HAZARDOUS SUBSTANCE which should be handled by trained staff only.
Handling Advice:	Avoid repeated freezing and thawing.
Storage:	4 °C/-20 °C
Storage Comment:	Store at 2 - 8 °C for up to six months or (in aliquots) at -20 °C for longer.

Images



Western Blotting

Image 1. TTC23 Antibody (Center) western blot analysis in 293 cell line lysates (35 µg/lane). This demonstrates the TTC23 antibody detected the TTC23 protein (arrow).