



[Go to Product page](#)

Datasheet for ABIN955371

anti-TTC23L antibody (C-Term)

2 Images

Overview

Quantity:	0.4 mL
Target:	TTC23L
Binding Specificity:	AA 326-357, C-Term
Reactivity:	Mouse, Human
Host:	Rabbit
Clonality:	Polyclonal
Conjugate:	This TTC23L antibody is un-conjugated
Application:	Western Blotting (WB), Immunohistochemistry (Paraffin-embedded Sections) (IHC (p)), Enzyme Immunoassay (EIA)

Product Details

Immunogen:	KLH conjugated synthetic peptide between 326-357 amino acids from the C-terminal region of human TTC23L
Isotype:	Ig Fraction
Specificity:	This antibody detects TTC23L (C-term).
Cross-Reactivity (Details):	Species reactivity (tested):Human, mouse
Purification:	Protein A column; followed by peptide affinity purification

Target Details

Target:	TTC23L
---------	--------

Target Details

Alternative Name:	TTC23L (TTC23L Products)
Background:	Synonyms: Tetratricopeptide repeat protein 23-like
Gene ID:	153657
NCBI Accession:	NP_653326

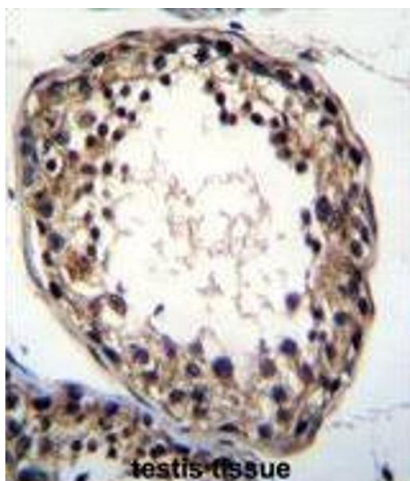
Application Details

Application Notes:	Optimal working dilution should be determined by the investigator.
Restrictions:	For Research Use only

Handling

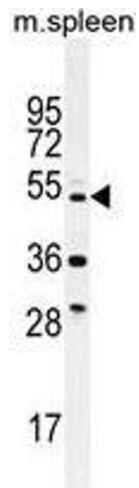
Format:	Liquid
Concentration:	0.25 mg/mL
Buffer:	PBS with 0.09 % (W/V) sodium azide
Preservative:	Sodium azide
Precaution of Use:	This product contains sodium azide: a POISONOUS AND HAZARDOUS SUBSTANCE which should be handled by trained staff only.
Handling Advice:	Avoid repeated freezing and thawing.
Storage:	4 °C/-20 °C
Storage Comment:	Store at 2 - 8 °C for up to six months or (in aliquots) at -20 °C for longer.

Images



Immunohistochemistry (Paraffin-embedded Sections)

Image 1. TTC23L Antibody (C-term) immunohistochemistry analysis in formalin fixed and paraffin embedded human testis tissue followed by peroxidase conjugation of the secondary antibody and DAB staining. This data demonstrates the use of TTC23L Antibody (C-term) for immunohistochemistry. Clinical relevance has not been evaluated.



Western Blotting

Image 2. TTC23L Antibody (C-term) western blot analysis in mouse spleen tissue lysates (35 µg/lane). This demonstrates the TTC23L antibody detected the TTC23L protein (arrow).