

Datasheet for ABIN955372
anti-TTC30B antibody (C-Term)[Go to Product page](#)

1 Image

Overview

Quantity:	0.4 mL
Target:	TTC30B
Binding Specificity:	AA 554-582, C-Term
Reactivity:	Human, Mouse
Host:	Rabbit
Clonality:	Polyclonal
Conjugate:	This TTC30B antibody is un-conjugated
Application:	Western Blotting (WB), Enzyme Immunoassay (EIA)

Product Details

Immunogen:	KLH conjugated synthetic peptide between 554-582 amino acids from the C-terminal region of human TTC30B
Isotype:	Ig Fraction
Specificity:	This antibody detects TTC30B (C-term).
Cross-Reactivity (Details):	Species reactivity (tested): Human, mouse
Purification:	Protein A column followed by peptide affinity purification

Target Details

Target:	TTC30B
Alternative Name:	TTC30B (TTC30B Products)

Target Details

Background: Required for polyglutamylation of axonemal tubulin (By similarity). Plays a role in anterograde intraflagellar transport (IFT), the process by which cilia precursors are transported from the base of the cilium to the site of their incorporation at the tip (By similarity).Synonyms: FLJ30990, TPR repeat protein 30B, Tetratricopeptide repeat protein 30B

Gene ID: 150737

NCBI Accession: [NP_689730](#)

Pathways: [Hedgehog Signaling](#)

Application Details

Application Notes: Optimal working dilution should be determined by the investigator.

Restrictions: For Research Use only

Handling

Format: Liquid

Concentration: 0.25 mg/mL

Buffer: PBS with 0.09 % (W/V) sodium azide

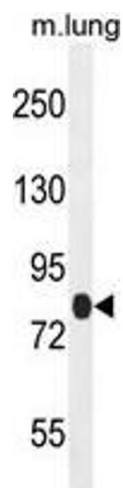
Preservative: Sodium azide

Precaution of Use: This product contains sodium azide: a POISONOUS AND HAZARDOUS SUBSTANCE which should be handled by trained staff only.

Handling Advice: Avoid repeated freezing and thawing.

Storage: 4 °C/-20 °C

Storage Comment: Store at 2 - 8 °C for up to six months or (in aliquots) at -20 °C for longer.



Western Blotting

Image 1. TTC30B Antibody (C-term) western blot analysis in mouse lung tissue lysates (35 µg/lane). This demonstrates the TTC30B antibody detected the TTC30B protein (arrow).