

Datasheet for ABIN955387
anti-TTLL8 antibody (N-Term)[Go to Product page](#)

1 Image

Overview

Quantity:	0.4 mL
Target:	TTLL8
Binding Specificity:	AA 37-67, N-Term
Reactivity:	Human
Host:	Rabbit
Clonality:	Polyclonal
Conjugate:	This TTLL8 antibody is un-conjugated
Application:	Western Blotting (WB), Enzyme Immunoassay (EIA)

Product Details

Immunogen:	KLH conjugated synthetic peptide between 37-67 amino acids from the N-terminal region of human TTLL8
Isotype:	Ig Fraction
Cross-Reactivity (Details):	Species reactivity (tested):Human
Purification:	Protein A column followed by peptide affinity purification

Target Details

Target:	TTLL8
Alternative Name:	TTLL8 (TTLL8 Products)
Background:	Monoglycylase which modifies both tubulin and non-tubulin proteins, generating side chains of

Target Details

glycine on the gamma-carboxyl groups of specific glutamate residues of target proteins. Monoglycylates tubulin, with a preference for alpha-tubulin toward beta-tubulin. Has the ability to modify non-tubulin proteins such as ANP32A, ANP32B, SET and NCL. Involved in the side-chain initiation step of the glycylation reaction by adding a single glycine chain to generate monoglycine side chains. Not involved in elongation step of the polyglycylation reaction (By similarity).Synonyms: Protein monoglycylase

Gene ID: 9606

Application Details

Application Notes: Optimal working dilution should be determined by the investigator.

Restrictions: For Research Use only

Handling

Format: Liquid

Concentration: 0.25 mg/mL

Buffer: PBS with 0.09 % (W/V) sodium azide

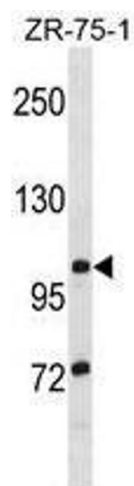
Preservative: Sodium azide

Precaution of Use: This product contains sodium azide: a POISONOUS AND HAZARDOUS SUBSTANCE which should be handled by trained staff only.

Handling Advice: Avoid repeated freezing and thawing.

Storage: 4 °C/-20 °C

Storage Comment: Store at 2 - 8 °C for up to six months or (in aliquots) at -20 °C for longer.



Western Blotting

Image 1. TTLL8 Antibody (N-term) western blot analysis in ZR-75-1 cell line lysates (35 µg/lane). This demonstrates the TTLL8 antibody detected the TTLL8 protein (arrow).