

Datasheet for ABIN955391
anti-TUBB2B antibody (N-Term)

3 Images

[Go to Product page](#)

Overview

Quantity:	0.4 mL
Target:	TUBB2B
Binding Specificity:	AA 19-47, N-Term
Reactivity:	Human
Host:	Rabbit
Clonality:	Polyclonal
Conjugate:	This TUBB2B antibody is un-conjugated
Application:	Western Blotting (WB), Immunofluorescence (IF), Immunohistochemistry (Paraffin-embedded Sections) (IHC (p)), Enzyme Immunoassay (EIA)

Product Details

Immunogen:	KLH conjugated synthetic peptide between 19-47 amino acids from the N-terminal region of human TUBB2B
Isotype:	Ig Fraction
Specificity:	This antibody detects TUBB2B (N-term).
Cross-Reactivity (Details):	Species reactivity (tested):Human
Purification:	Protein A column followed by peptide affinity purification

Target Details

Target:	TUBB2B
---------	--------

Target Details

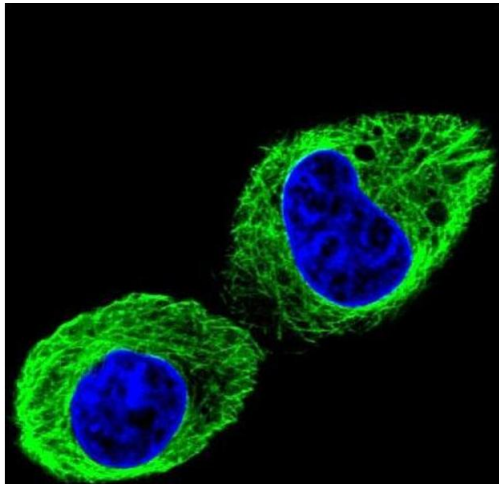
Alternative Name:	TUBB2B (TUBB2B Products)
Background:	The protein encoded by this gene is a beta isoform of tubulin, which binds GTP and is a major component of microtubules. This gene is highly similar to TUBB2A and TUBB2C. Defects in this gene are a cause of asymmetric polymicrogyria. [provided by RefSeq].Synonyms: RP11-506K6.1, Tubulin beta-2B chain, beta II Tubulin B, beta-Tubulin
Gene ID:	347733
NCBI Accession:	NP_821080
Pathways:	Microtubule Dynamics

Application Details

Application Notes:	Optimal working dilution should be determined by the investigator.
Restrictions:	For Research Use only

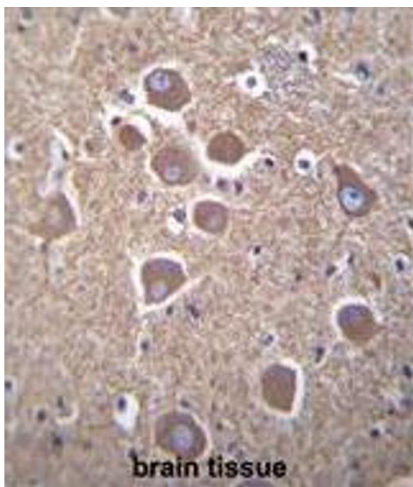
Handling

Format:	Liquid
Concentration:	0.25 mg/mL
Buffer:	PBS with 0.09 % (W/V) sodium azide
Preservative:	Sodium azide
Precaution of Use:	This product contains sodium azide: a POISONOUS AND HAZARDOUS SUBSTANCE which should be handled by trained staff only.
Handling Advice:	Avoid repeated freezing and thawing.
Storage:	4 °C/-20 °C
Storage Comment:	Store at 2 - 8 °C for up to six months or (in aliquots) at -20 °C for longer.



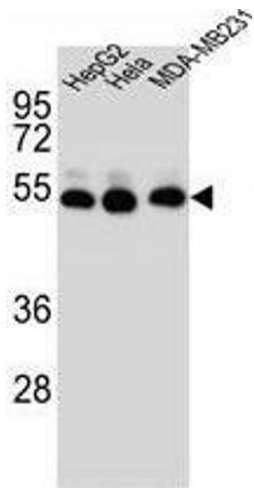
Immunofluorescence

Image 1. Confocal immunofluorescent analysis of TUBB2B Antibody (N-term) with HepG2 cell followed by Alexa Fluor 488-conjugated goat anti-rabbit IgG (green). DAPI was used to stain the cell nuclear (blue).



Immunohistochemistry (Paraffin-embedded Sections)

Image 2. TUBB2B Antibody (N-term) immunohistochemistry analysis in formalin fixed and paraffin embedded human brain tissue followed by peroxidase conjugation of the secondary antibody and DAB staining. This data demonstrates the use of TUBB2B Antibody (N-term) for immunohistochemistry. Clinical relevance has not been evaluated.



Western Blotting

Image 3. TUBB2B Antibody (N-term) western blot analysis in HepG2,Hela,MDA-MB231 cell line lysates (35 µg/lane). This demonstrates the TUBB2B antibody detected the TUBB2B protein (arrow).