

Datasheet for ABIN955395

anti-TUBb6 antibody (Middle Region)



[Go to Product page](#)

1 Image

Overview

Quantity:	0.4 mL
Target:	TUBb6
Binding Specificity:	AA 146-174, Middle Region
Reactivity:	Human
Host:	Rabbit
Clonality:	Polyclonal
Conjugate:	This TUBb6 antibody is un-conjugated
Application:	Western Blotting (WB), Enzyme Immunoassay (EIA)

Product Details

Immunogen:	KLH conjugated synthetic peptide between 146-174 amino acids from the Central region of human TUBB6
Isotype:	Ig Fraction
Specificity:	This antibody detects TUBB6 (Center).
Cross-Reactivity (Details):	Species reactivity (tested):Human
Purification:	Protein A column followed by peptide affinity purification

Target Details

Target:	TUBb6
Alternative Name:	TUBB6 (TUBb6 Products)

Target Details

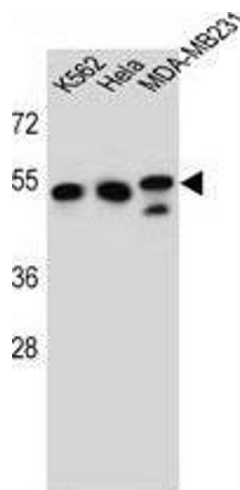
Background:	Tubulin is the major constituent of microtubules. It binds two moles of GTP, one at an exchangeable site on the beta chain and one at a non-exchangeable site on the alpha-chain (By similarity).Synonyms: Tubulin beta-6 chain
Gene ID:	84617
NCBI Accession:	NP_115914
Pathways:	Microtubule Dynamics

Application Details

Application Notes:	Optimal working dilution should be determined by the investigator.
Restrictions:	For Research Use only

Handling

Format:	Liquid
Concentration:	0.25 mg/mL
Buffer:	PBS with 0.09 % (W/V) sodium azide
Preservative:	Sodium azide
Precaution of Use:	This product contains sodium azide: a POISONOUS AND HAZARDOUS SUBSTANCE which should be handled by trained staff only.
Handling Advice:	Avoid repeated freezing and thawing.
Storage:	4 °C/-20 °C
Storage Comment:	Store at 2 - 8 °C for up to six months or (in aliquots) at -20 °C for longer.



Western Blotting

Image 1. TUBB6 Antibody (Center) western blot analysis in K562,HeLa,MDA-MB231 cell line lysates (35 µg/lane). This demonstrates the TUBB6 antibody detected the TUBB6 protein (arrow).