

Datasheet for ABIN955405  
**anti-NME9 antibody (Middle Region)**

## 3 Images

[Go to Product page](#)

## Overview

Quantity:	0.4 mL
Target:	NME9
Binding Specificity:	AA 111-140, Middle Region
Reactivity:	Human
Host:	Rabbit
Clonality:	Polyclonal
Conjugate:	This NME9 antibody is un-conjugated
Application:	Western Blotting (WB), Immunohistochemistry (Paraffin-embedded Sections) (IHC (p)), Enzyme Immunoassay (EIA)

## Product Details

Immunogen:	KLH conjugated synthetic peptide between 111-140 amino acids from the Central region of human TXNDC6
Isotype:	Ig Fraction
Specificity:	This antibody detects TXNDC6 / TXL2 (Center).
Cross-Reactivity (Details):	Species reactivity (tested):Human
Purification:	Protein A column followed by peptide affinity purification

## Target Details

Target:	NME9
---------	------

## Target Details

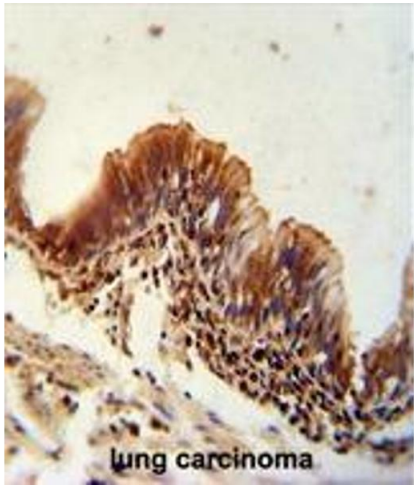
Alternative Name:	TXNDC6 / TXL2 ( <a href="#">NME9 Products</a> )
Background:	May be a regulator of microtubule physiology.Synonyms: Thioredoxin domain-containing protein 6, Thioredoxin-like protein 2, Txl-2
Gene ID:	347736
NCBI Accession:	<a href="#">NP_835231</a>
Pathways:	<a href="#">Ribonucleoside Biosynthetic Process</a> , <a href="#">Cell RedoxHomeostasis</a>

## Application Details

Application Notes:	Optimal working dilution should be determined by the investigator.
Restrictions:	For Research Use only

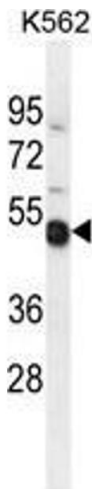
## Handling

Format:	Liquid
Concentration:	0.25 mg/mL
Buffer:	PBS with 0.09 % (W/V) sodium azide
Preservative:	Sodium azide
Precaution of Use:	This product contains sodium azide: a POISONOUS AND HAZARDOUS SUBSTANCE which should be handled by trained staff only.
Handling Advice:	Avoid repeated freezing and thawing.
Storage:	4 °C/-20 °C
Storage Comment:	Store at 2 - 8 °C for up to six months or (in aliquots) at -20 °C for longer.



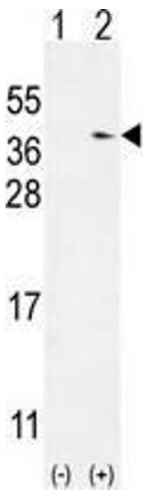
Immunohistochemistry (Paraffin-embedded Sections)

**Image 1.** TXNDC6 antibody (Center) immunohistochemistry analysis in formalin fixed and paraffin embedded human lung carcinoma followed by peroxidase conjugation of the secondary antibody and DAB staining. This data demonstrates the use of the TXNDC6 antibody (Center) for immunohistochemistry. Clinical relevance has not been evaluated.



Western Blotting

**Image 2.** TXNDC6 Antibody (Center) western blot analysis in K562 cell line lysates (35 µg/lane). This demonstrates the TXNDC6 antibody detected the TXNDC6 protein (arrow).



Western Blotting

**Image 3.** Western blot analysis of TXNDC6 (arrow) using rabbit polyclonal TXNDC6 Antibody (Center) . 293 cell lysates (2 µg/lane) either nontransfected (Lane 1) or transiently transfected (Lane 2) with the TXNDC6 gene.