

Datasheet for ABIN955428  
**anti-UBE2NL antibody (N-Term)**[Go to Product page](#)

## 2 Images

## Overview

|                      |  |
|----------------------|--|
| Quantity:            | 0.4 mL   |
| Target:              | UBE2NL   |
| Binding Specificity: | AA 5-34, N-Term  |
| Reactivity:          | Human  |
| Host:                | Rabbit   |
| Clonality:           | Polyclonal   |
| Conjugate:           | This UBE2NL antibody is un-conjugated  |
| Application:         | Western Blotting (WB), Immunohistochemistry (Paraffin-embedded Sections) (IHC (p)), Enzyme Immunoassay (EIA) |

## Product Details

|                             |  |
|-----------------------------|--|
| Immunogen:                  | KLH conjugated synthetic peptide between 5-34 amino acids from the N-terminal region of human UBE2NL |
| Isotype:                    | Ig Fraction  |
| Specificity:                | This antibody detects UBE2NL (N-term).   |
| Cross-Reactivity (Details): | Species reactivity (tested):Human  |
| Purification:               | Protein A column followed by peptide affinity purification   |

## Target Details

|         |        |
|---------|--------|
| Target: | UBE2NL |
|---------|--------|

## Target Details

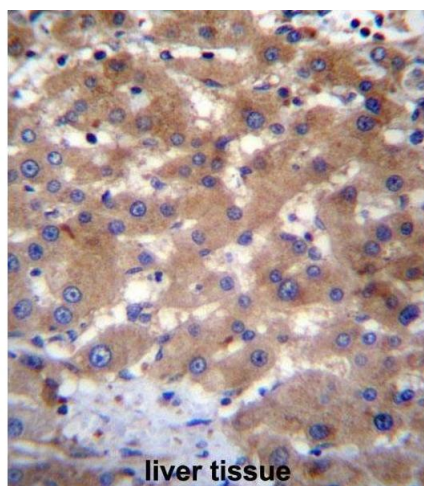
|                   |   |
|-------------------|---|
| Alternative Name: | UBE2NL ( <a href="#">UBE2NL Products</a> )  |
| Background:       | This gene is intronless and encodes a member of the ubiquitin-conjugating enzyme family. The protein product is 91 % identical to ubiquitin-conjugating enzyme E2N, a multi-exon gene product.Synonyms: Putative ubiquitin-conjugating enzyme E2 N-like |
| Gene ID:          | 389898  |
| NCBI Accession:   | <a href="#">NP_001013007</a>  |

## Application Details

|                    |  |
|--------------------|--|
| Application Notes: | Optimal working dilution should be determined by the investigator. |
| Restrictions:      | For Research Use only  |

## Handling

|                    |  |
|--------------------|--|
| Format:            | Liquid   |
| Concentration:     | 0.25 mg/mL   |
| Buffer:            | PBS with 0.09 % (W/V) sodium azide   |
| Preservative:      | Sodium azide   |
| Precaution of Use: | This product contains sodium azide: a POISONOUS AND HAZARDOUS SUBSTANCE which should be handled by trained staff only. |
| Handling Advice:   | Avoid repeated freezing and thawing.   |
| Storage:           | 4 °C/-20 °C  |
| Storage Comment:   | Store at 2 - 8 °C for up to six months or (in aliquots) at -20 °C for longer.  |



#### Immunohistochemistry (Paraffin-embedded Sections)

**Image 1.** UBE2NL Antibody (N-term) immunohistochemistry analysis in formalin fixed and paraffin embedded human liver tissue followed by peroxidase conjugation of the secondary antibody and DAB staining. This data demonstrates the use of UBE2NL Antibody (N-term) for immunohistochemistry. Clinical relevance has not been evaluated.



#### Western Blotting

**Image 2.** UBE2NL Antibody (N-term) western blot analysis in HepG2 cell line lysates (35 µg/lane). This demonstrates the UBE2NL antibody detected the UBE2NL protein (arrow).